

# Junior Knowledge

## Book 1



**Bharati Bhawan**

PUBLISHERS & DISTRIBUTORS

*Published by*

**BHARATI BHAWAN (Publishers & Distributors)**

www.bharatibhawan.in      email: editorial@bbpd.in

4271/3 Ansari Road, Daryaganj, NEW DELHI 110 002, Phone: 23286557

A-61 B/2 Sector 63, NOIDA 201 307, Phone: 4757400

Thakurbari Road, PATNA 800 003, Phone: 2670325

10 Raja Subodh Mallick Square, KOLKATA 700 013, Phone: 22250651

No. 98 Sirsi Circle, Mysore Road, BENGALURU 560 018, Phone: 26740560

© Publisher

First edition 2014

2023 print

Illustrations: Kallol Majumder

*Junior Knowledge 1*

Printed at Manipal Technologies Limited, Manipal

# Contents

## Our World

1. The Sky	1
2. Mountains, Plains and Seas	2
3. Weather and Seasons	4

## Plants and Animals

4. Plants around Us	6
5. Flowers	8
6. Fruit and Vegetables	10
7. Animals around Us	13
8. Land Animals	14
9. Animals That Live in Water	16
10. Animals with Wings	17
11. Homes of Animals	18
12. Baby Animals	19
13. <u>Quiz 1</u>	20

## Life around Us

14. Homes, Forts, Towers and Bridges	22
15. What We Wear	24
16. Cars, Boats and Planes	25
17. Jobs	27
18. Where Are They Going?	29

## Having Fun

19. Fun and Games	30
20. Bats and Balls	35
21. Making Music	36
22. Festivals	37

## Science

23. Parts of the Body	38
24. The Five Senses	40
25. Materials	41
26. Things We Use	43
27. Computers	45
28. <u>Quiz 2</u>	46

## Read, See, Hear

29. Stories	48
30. Rhymes	49
31. Story Creatures	50
32. Cartoons and Movies	51
33. Sounds	53

## Figure It Out

34. How Many?	54
35. Pairs	55
36. Day and Night	56
37. Odd One Out	57

## India

38. My India	58
39. Monuments of India	60
40. Famous Indians	61

## Life Skills

41. Reading Signs	62
42. Houses of Prayer	64
43. <u>Quiz 3</u>	65

Answers	67
---------	----

# Acknowledgements

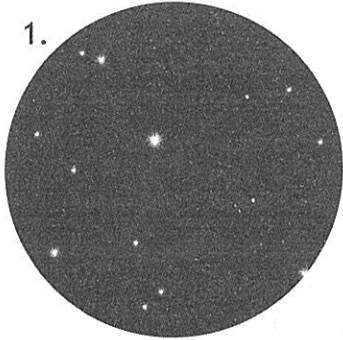
The photographs used in this book are largely from our own collection, but there are some which have been provided by others. We wish to thank James Watt, Phil Hartel, Luciano Napolitano, Marcus Richardson, Adagio, Scott Colmer, Patrycja Cieszkowska Krystosik, Soumitra Sinha, the US Fish and Wildlife Service, the US National Biological Information Infrastructure, and the US National Oceanic and Atmospheric Administration for permitting us to use their photographs.



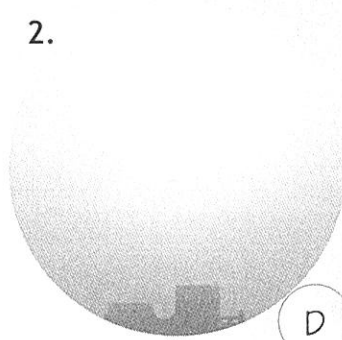
# 1. The Sky

What are these in the sky? Ring their names. Write D for those we see only in daytime.

1.

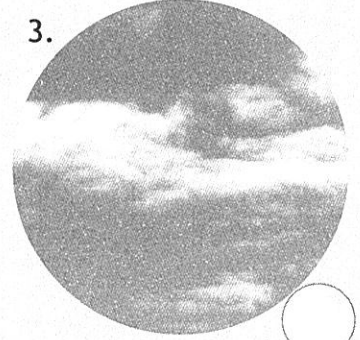


2.



D

3.



1.

Q N Z P S T A R S

2.

A S L M P

3.

Q B R C L O U D S Y N S

4.

L I M

5.

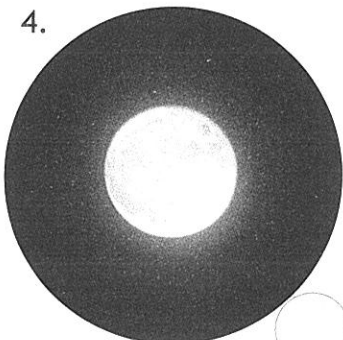
T Y R A I N B O W O P T

6.

C L I G H T N I N G O

N V T

4.



5.



6.



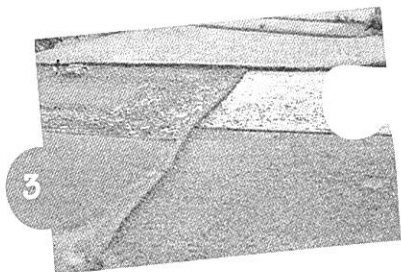
# 2. Mountains, Plains and Seas

1. Match as shown.



2

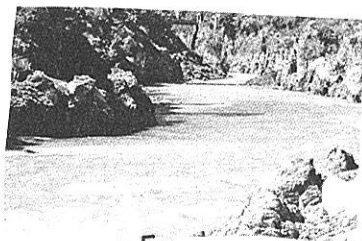
A large pool  
of water



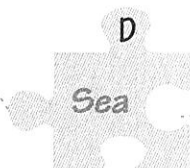
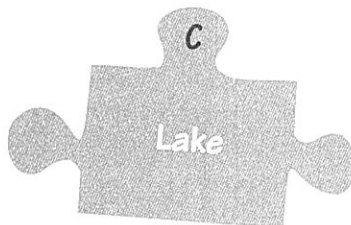
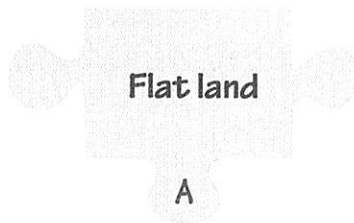
3

4

Sri Lanka,  
Andamans



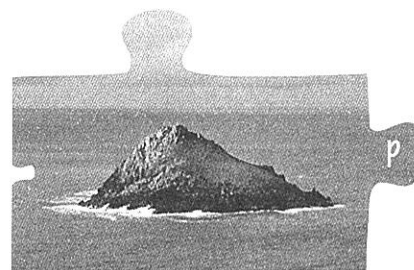
5



m  
Yamuna,  
Kaveri



Salty water o



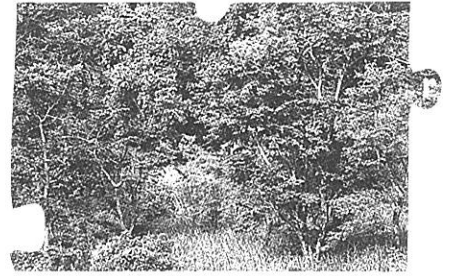
Plain q

6

Very high  
and pointed

F

Desert



7



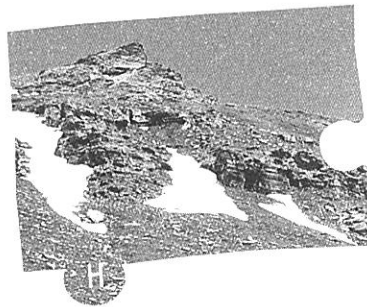
G Forest

Mountain

s

8

Has lots  
of trees

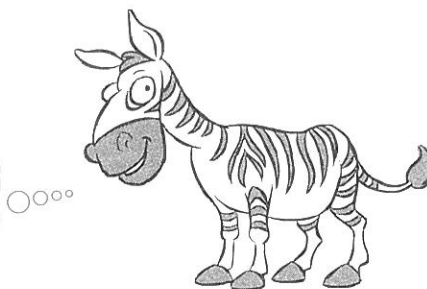


H

Dry land

t

2. Colour the correct boxes.



a. A small mountain is a 

field	hill	stone
-------	------	-------

 .

b. A small river is a 

stream	lake	pool
--------	------	------

 .

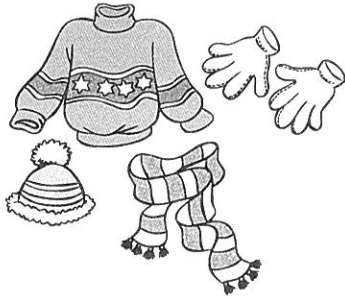
c. A small lake is a 

cave	pond	sea
------	------	-----

 .

### 3. Weather and Seasons

1. Write weather words. Use the words given below.



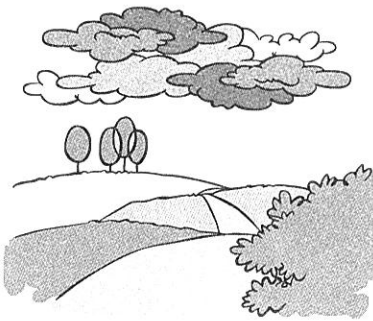
a. ....



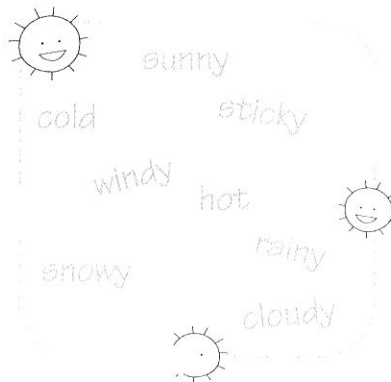
b. ....



c. ....



d. ....



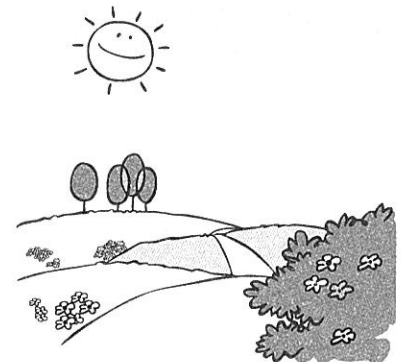
e. ....



f. ....



g. ....



h. ....

2. Write the seasons in the boxes, as shown.

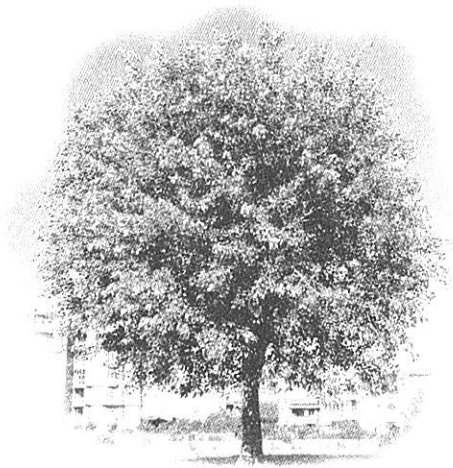


## 4. Plants around Us

We see different kinds of plants around us. A tree is a big plant with a thick trunk. A bush is short, with thin, woody stems. Many plants have soft stems. Some of them can stand by themselves. Climbers can stand only by holding on to something, like a plant or a wall.



Tree, bush or climber?



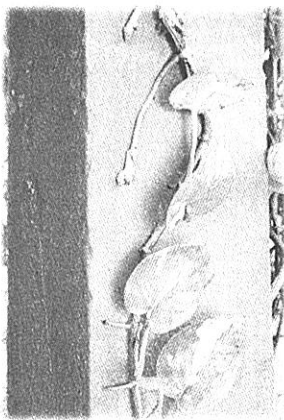
1. \_\_\_\_\_



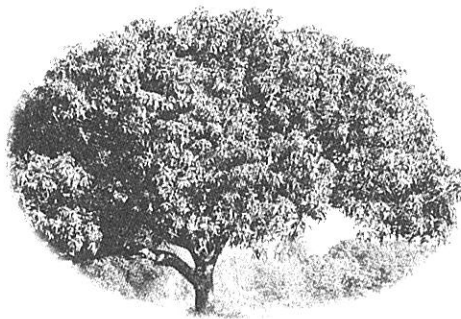
2. \_\_\_\_\_



3. \_\_\_\_\_



4. \_\_\_\_\_



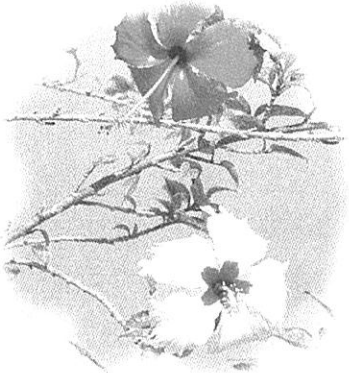
5. \_\_\_\_\_



6. \_\_\_\_\_



Write S for soft stem and W for woody stem.



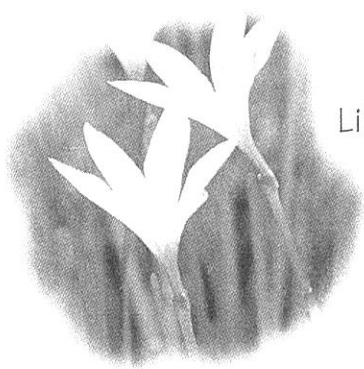
Hibiscus ☐



Pumpkin ☐



Tulsi ☐



Lily ☐



Periwinkle ☐



Crepe jasmine ☐

Do these grow on a tree or a bush?

Mango \_\_\_\_\_

Tulsi leaves \_\_\_\_\_

Coconut \_\_\_\_\_

Hibiscus \_\_\_\_\_

Crepe jasmine \_\_\_\_\_

Apple \_\_\_\_\_

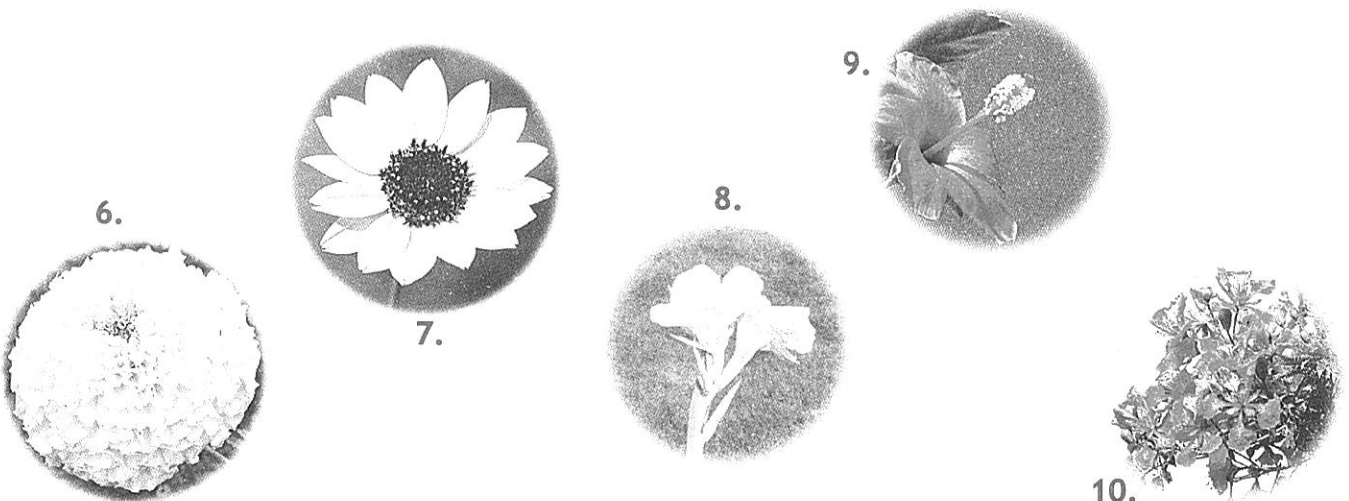


# 5. Flowers

1. Ring the flower names.



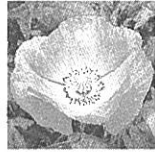
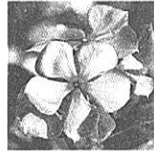
1		C	B	P	E	R	I	W	I	N	K	L	E				
2, 3	D					T	L	R	O	S	E	W					
4	A	P	A	N	S	Y	M						A				
5, 6	H	L				B	D	R	M	A	R	I	G	O	L	D	
7	L	I		C	S	U	N	F	L	O	W	E	R	V	P		
8	I	L	L			N		C	A	N	N	A	P		S		
9	A	Y						P	H	I	B	I	S	C	U	S	T
10	N	O	G	U	L	M	O	H	A	R	L				C		





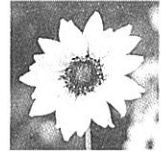
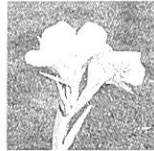
2. Cross out the missing flower in each row.

Rose Periwinkle Lotus Poppy



Dahlia Poppy Lily Marigold

Sunflower Canna Pansy Petunia

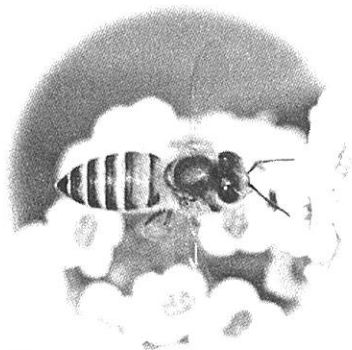


Gulmohar Hibiscus Rose Petunia

Lotus Pansy Lily Bougainvillea



3. Which of these sip the nectar of flowers? Tick to show.



Bee



Garden lizard



Sunbird

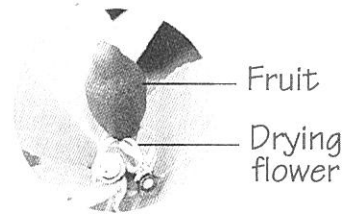


Butterfly

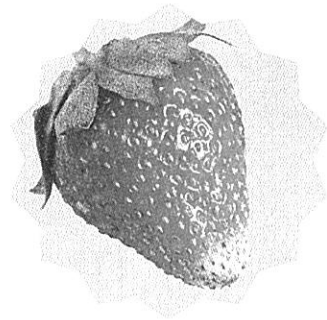
# 6. Fruit and Vegetables



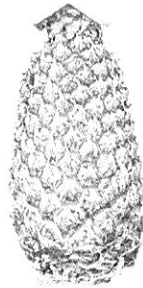
Fruits grow from flowers.  
They have seeds.



## 1. Name the fruits.



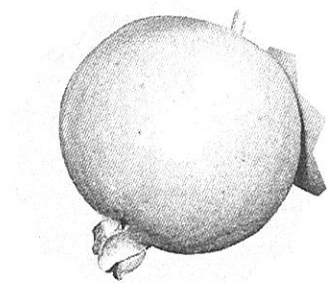
a. ....



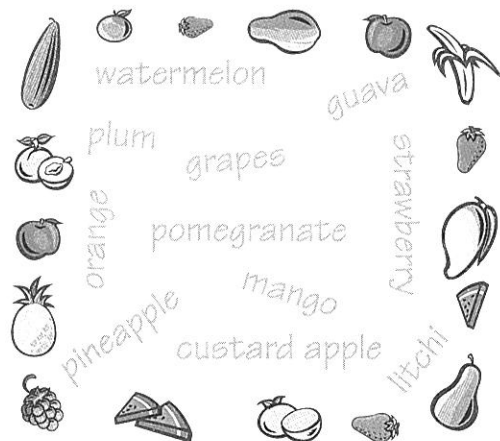
b. ....



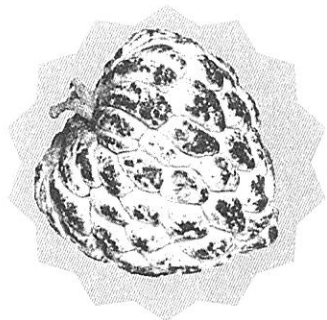
c. ....



d. ....



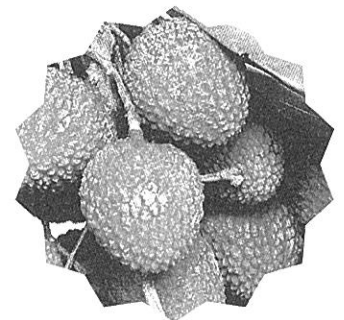
e. ....



f. ....

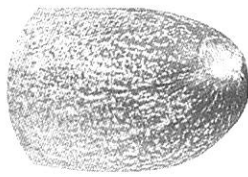


g. ....

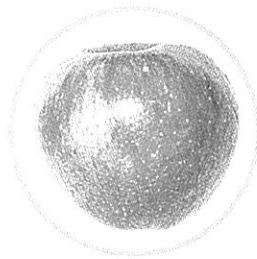


h. ....

2. Match each fruit with its seed.



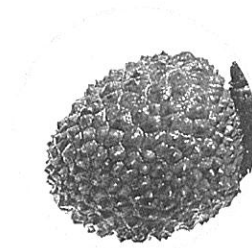
1.



2.



3.



4.



5.



a.



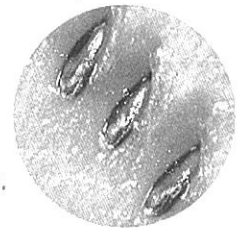
b.



c.



d.



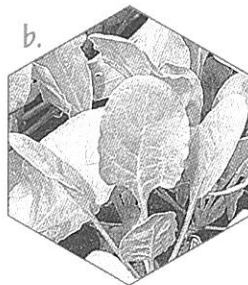
e.

3. Name the vegetables.

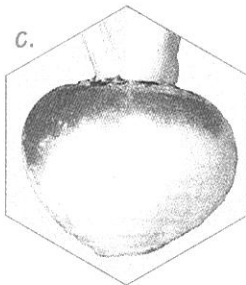
a.



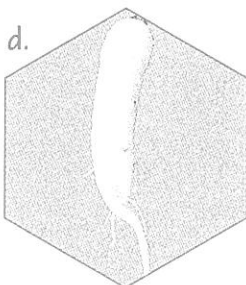
b.



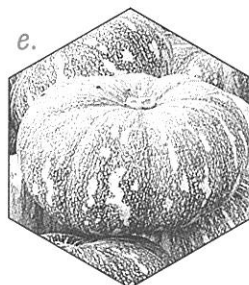
c.



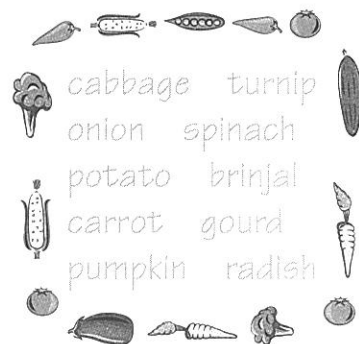
d.



e.



Vegetables are parts of plants. Sweet fruit and most seeds (rice, dal) are not vegetables. But fruit like tomato and brinjal are used as vegetables.



4. Match each vegetable with its name, as shown.

a.



b.



c.

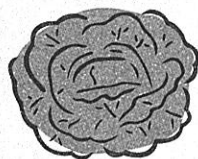


d.



broccoli cauliflower cabbage pepper (capsicum) garlic beet onion pea

e.



f.



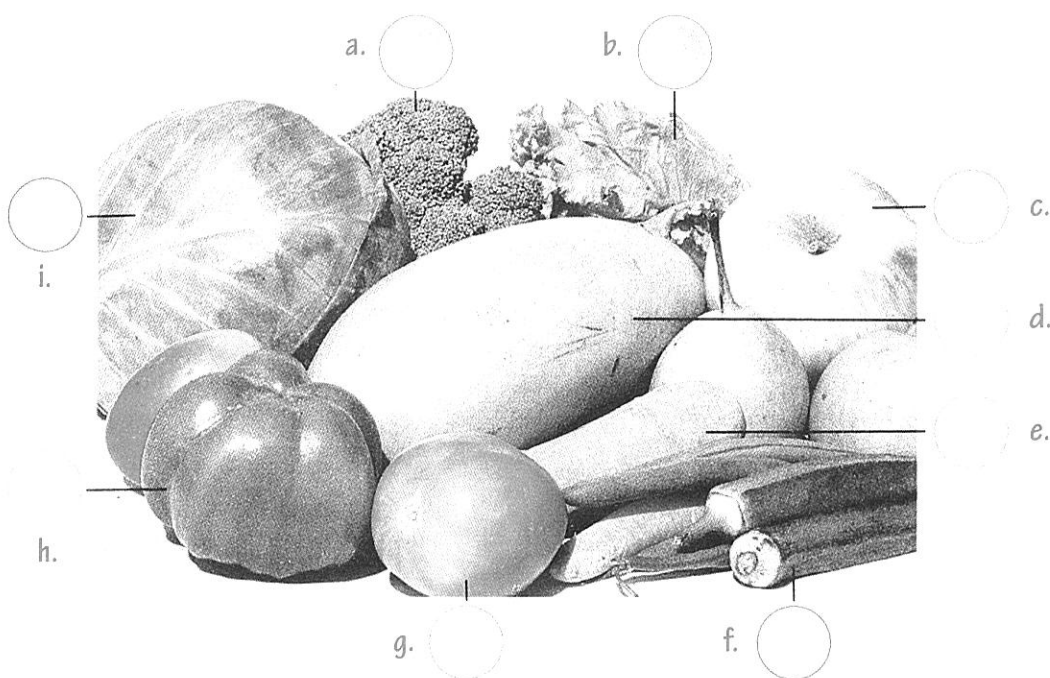
g.



h.



5. Write F for fruit. Write V for vegetables that are not fruit.



Fruits have seeds.



## 7. Animals around Us

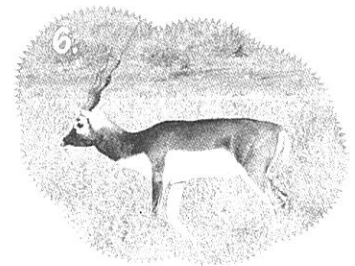
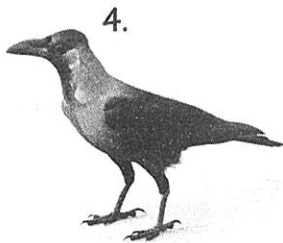
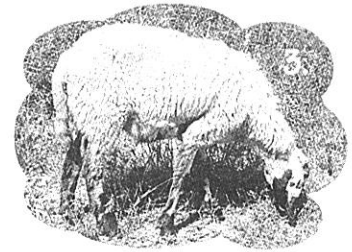
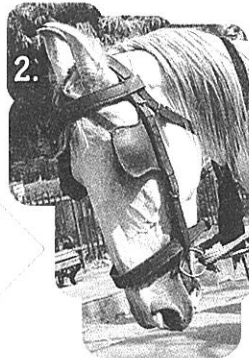


We keep some animals. But most animals live freely. Animals that live freely are **wild animals**.

We keep **pets** at home. We keep **farm animals** for things like food and wool, and **work animals** to do our work.



Write P for pet, F for farm and work animals, and W for wild animal.

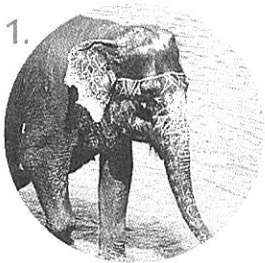


# 8. Land Animals

1. Here are some animals that live on land. Write their names in the boxes.

[koala giraffe zebra lion gorilla hippopotamus tiger leopard bear elephant]

1.



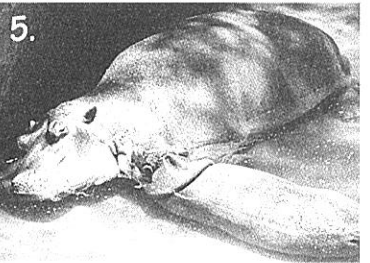
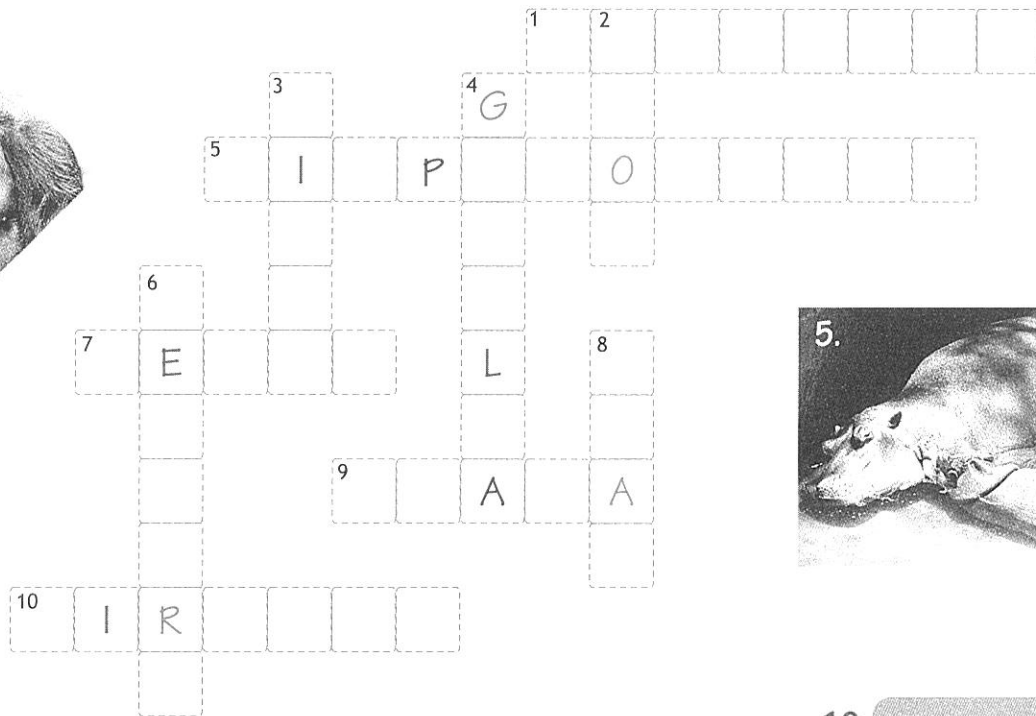
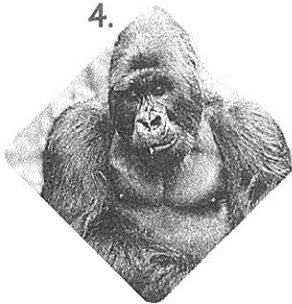
2.



3.



4.



6.



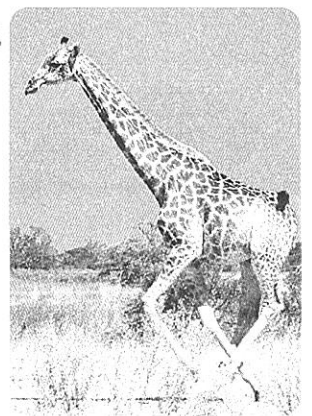
8.



9.



10.





## 2. Match.



1.



2.



3.



4.



a.



b.

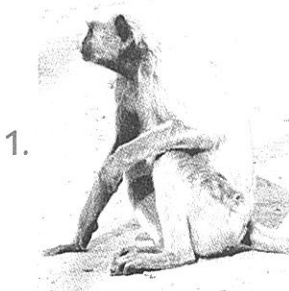


c.

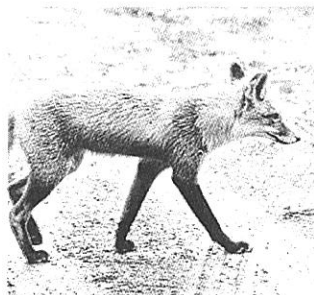


d.

## 3. Find the tail.



1.



2.



a.



b.



3.



4.



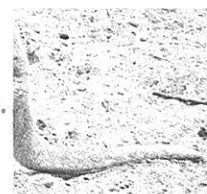
c.



d.



5.



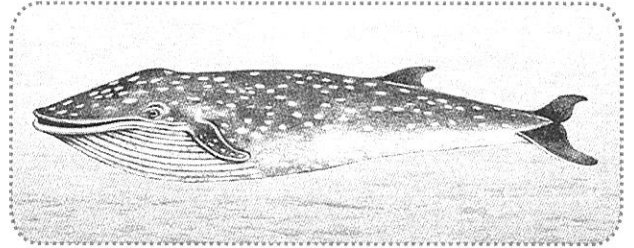
e.

## 9. Animals That Live in Water

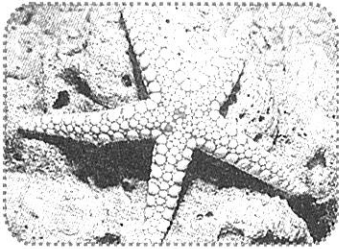
These animals live in water. Name them.



1. \_\_\_\_\_

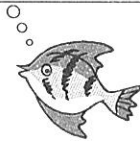


2. \_\_\_\_\_



3. \_\_\_\_\_

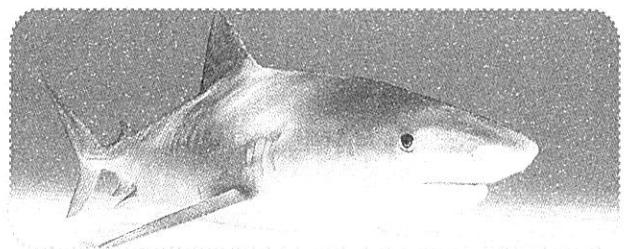
The blue whale is the biggest animal on earth. It is even bigger than the biggest dinosaur that lived!



4. \_\_\_\_\_



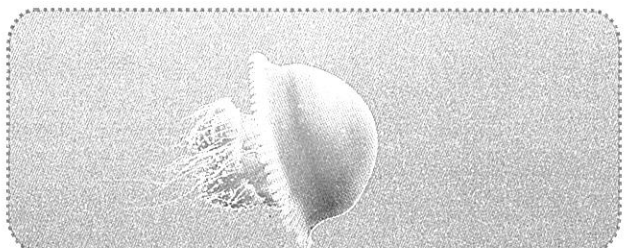
5. \_\_\_\_\_



6. \_\_\_\_\_



7. \_\_\_\_\_



8. \_\_\_\_\_

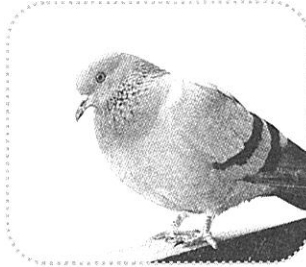


# 10. Animals with Wings

1. These animals have wings. Name them. Which of them are birds? Tick them.



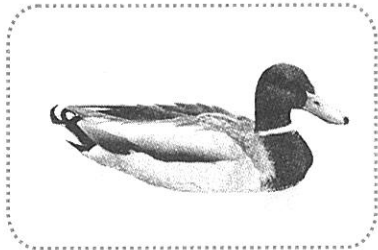
a. C \_ \_ o \_ \_



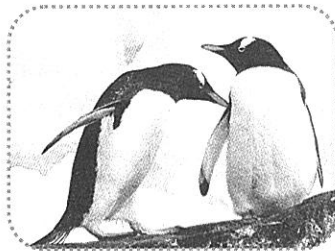
b. P \_ \_ ge \_ \_ n



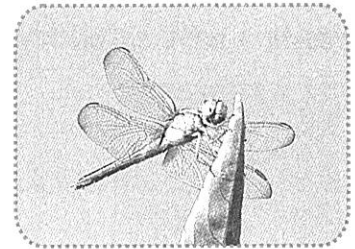
c. B \_ \_ tt \_ \_ rfl \_ \_



d. D \_ \_ c \_ \_



e. P \_ \_ \_ gu \_ \_ n



f. Dra \_ \_ onf \_ \_ y



g. K \_ \_ t \_ \_



h. Sp \_ \_ rr \_ \_ w



i. \_ \_ \_ \_ \_



j. O \_ \_ tr \_ \_ ch

A bird has feathers  
and a beak.



2. Write Yes or No.

- All animals with wings can fly. \_\_\_\_\_
- Ostriches cannot fly. \_\_\_\_\_
- Penguins cannot fly. They can swim. \_\_\_\_\_

# 11. Homes of Animals

Tick to choose. More than one answer can be correct.

## 1. Makes a nest



a. Bird



b. Monkey

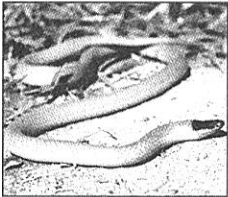


c. Squirrel

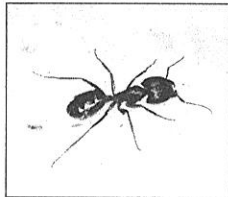


d. Cat

## 2. Digs a hole to live in



a. Snake



b. Ant



c. Fox

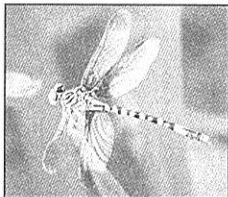


d. Rabbit

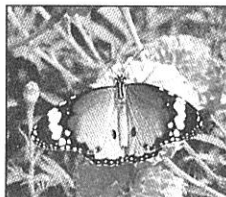
## 3. Lives in a nest called hive



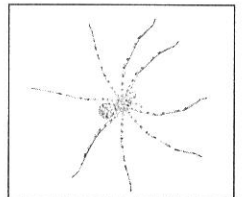
a. Bee



b. Dragonfly



c. Butterfly



d. Spider

## 4. Lives in a den



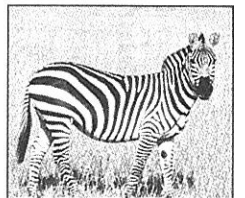
a. Bear



b. Lion



c. Wolf



d. Zebra

## 5. Lives in a pen that we make for it



a. Sheep



b. Dog



c. Chicken



d. Cow

## 12. Baby Animals

The babies of the animals in each box have the same name. Write the name of the baby animal in each box. [calf foal pup cub joey]

Baby:



Dog



Squirrel

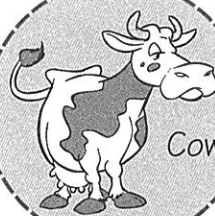


Bat

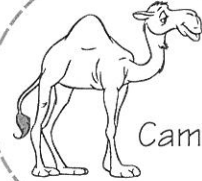


Rat

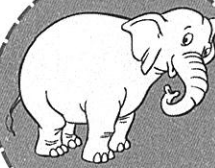
Baby:



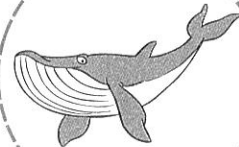
Cow



Camel



Elephant



Whale

Baby:



Lion



Bear



Tiger



Cheetah

Baby:



Horse



Donkey

Baby:



Koala



Kangaroo

# 13. Quiz 1

1. Tick the correct answer.

1. Clouds are made up of

a. air

b. water

2. Spring comes between

a. winter and summer

b. summer and winter

3. Most of the earth's water is in its

a. lakes

b. oceans

4. Lakshadweep is a group of

a. islands

b. mountains

5. The name of the biggest desert is

a. Nile

b. Sahara

6. Elephants cannot

a. sleep

b. jump

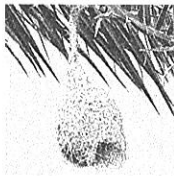
7. I cannot stick out my tongue. I am a

a. lizard

b. crocodile

8. I am baya, a weaver bird. My nest is

a.



b.



9. I am a cygnet. I am a young

a.



b.



10. I eat insects or fruit. I fly, but I am not a bird. I am a

a.



b.



## 2. True or false?

- a. Mount Everest is the tallest mountain.
- b. The Nile is the longest river.
- c. The koala is a bear.
- d. Sea horses are fish.
- e. A fawn is a baby deer.



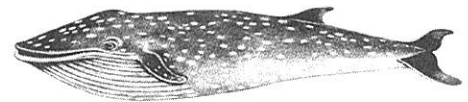
## 3. Match.

### 1. Elephant



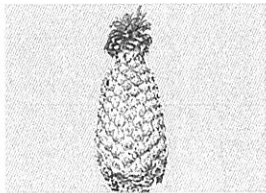
### a. Biggest fruit growing on a tree

### b. Blue whale

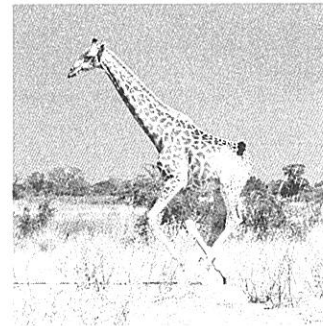


### 2. Tallest animal

### 3. Pineapple



### c. Giraffe



### 4. Jackfruit



### d. Cheetah



### 5. Biggest animal

- e. Small fruits together make this big fruit used for juices

### 6. Fastest land animal

- f. Biggest land animal

# 14. Homes, Forts, Towers and Bridges

1. Write the name of the home below its picture.

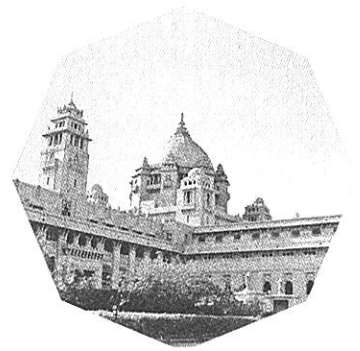
(palace hut igloo topee gor houseboat)



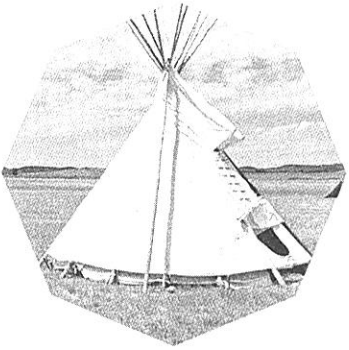
a. ....



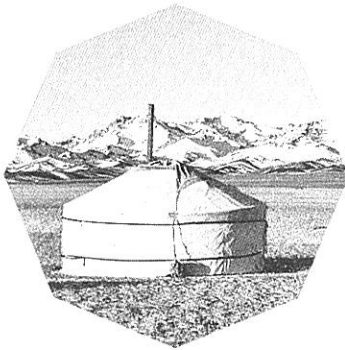
b. ....



c. ....



d. ....



e. ....



f. ....

2. Colour the picture and mark ✓ or ✗.

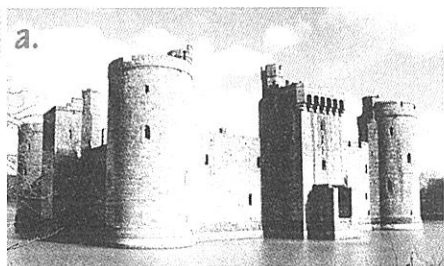
- This is a **palace**.
- This is a **castle**.
- A prince or a ruler lives in it.
- Farmers and shopkeepers also live in it.
- It has **strong walls**.
- It has **towers**.
- It has water around it for drinking.
- The deep water keeps it **safe**.
- The **bridge** is pulled up to stop enemies.
- There are many such buildings in India.



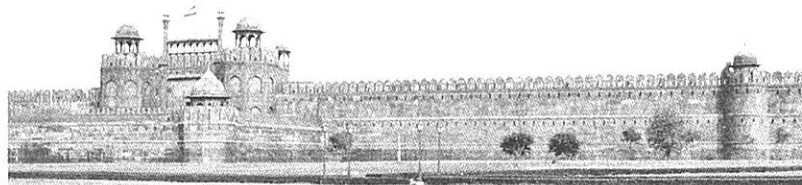


3. Write B for bridge, C for castle, F for fort and T for tower.

a.



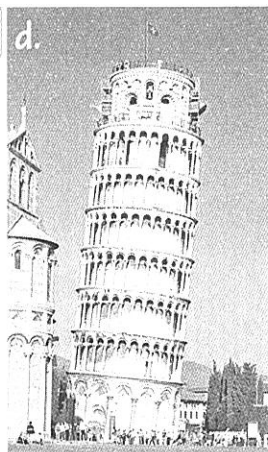
b.



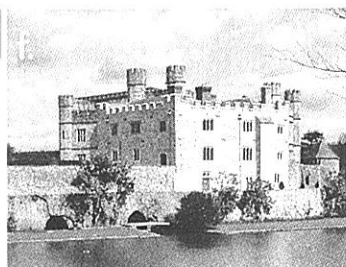
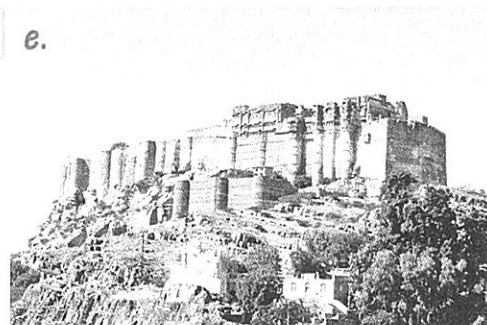
c.



d.



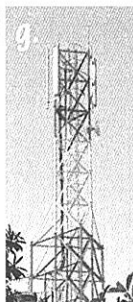
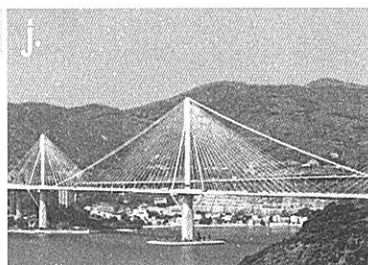
e.



h.



j.



A fort is built to defend an area.  
People may have homes inside a fort.

4. Guess the name and tick your choice.



Castle Bridge

☐

Twin Towers

☐

Tower Bridge

☐


# 15. What We Wear

1. Tick what they are wearing.

Sari  
Blouse  
Chunni  
Kameez



Churidar  
Ghagra  
Chunni  
Kurta



Dhoti  
Kurta  
Lungi  
Pyjama



d.



Frock  
Skirt  
Blouse  
Socks

e.



Trousers  
Waistcoat  
Shorts  
Tie

f.



Ghagra  
Choli  
Salwar  
Chunni

g.



Kurta  
Pagdi  
Dhoti  
Shirt

h.



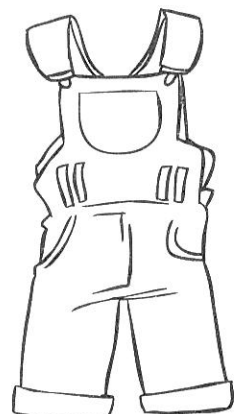
Sherwani  
Waistcoat  
Kurta  
Pagdi

i.



Frock  
Skirt  
Gown  
Headband

2. Colour the jacket, the jersey and the dungarees.

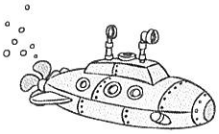




# 16. Cars, Boats and Planes

1. Where do these things travel? Match as shown.

a.



b.



c.



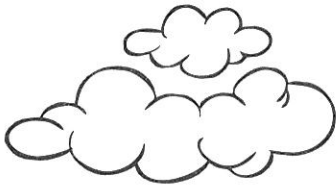
d.



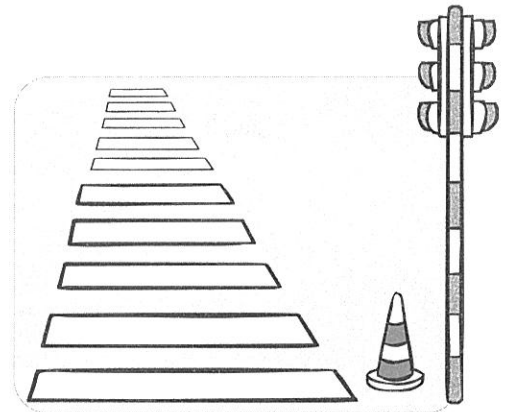
e.



Air



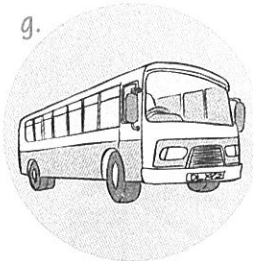
Water



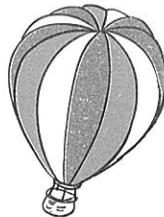
f.



g.



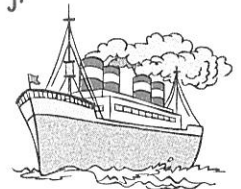
h.



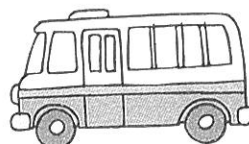
i.



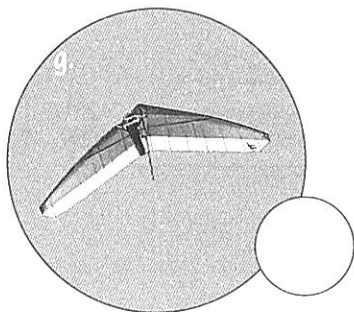
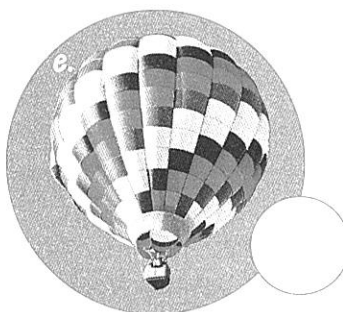
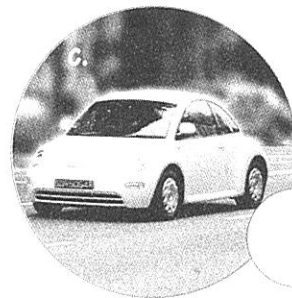
j.



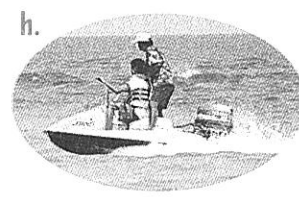
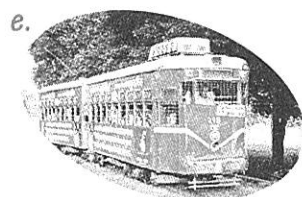
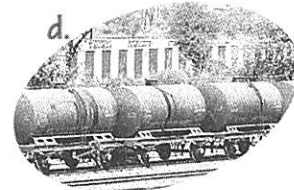
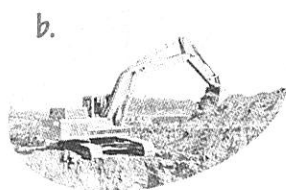
2. What moves best here? Tick to show.



3. Write E if it has an engine and N if it does not.



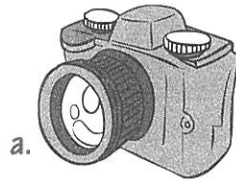
4. Tick those we use to travel.



# 17. Jobs

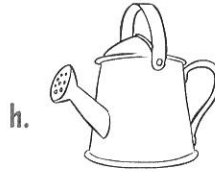
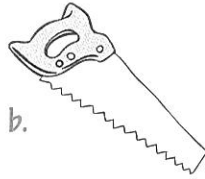
1. Whose tools? Match.

1. Weaver



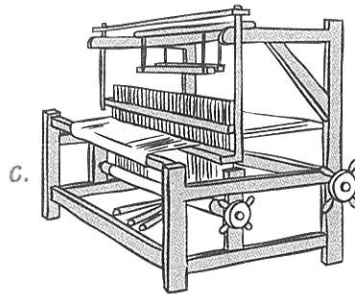
7. Gardener

2. Photographer



8. Barber

3. Carpenter



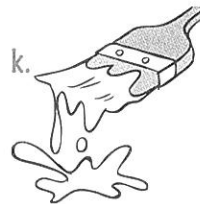
9. Doctor

4. Sweeper



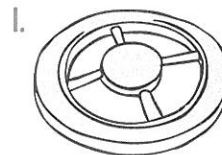
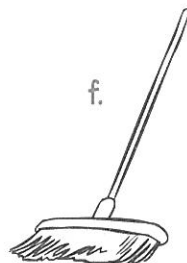
10. Potter

5. Tailor



11. Soldier

6. Cook



12. Painter

## 2. Who are they?



a. ....



b. ....



c. ....



d. ....



e. ....



f. ....



g. ....



h. ....



i. ....

## 3. Tick to show. The shop is owned by a



- a. farmer
- b. grocer
- c. bookseller



- a. greengrocer
- b. grocer
- c. florist



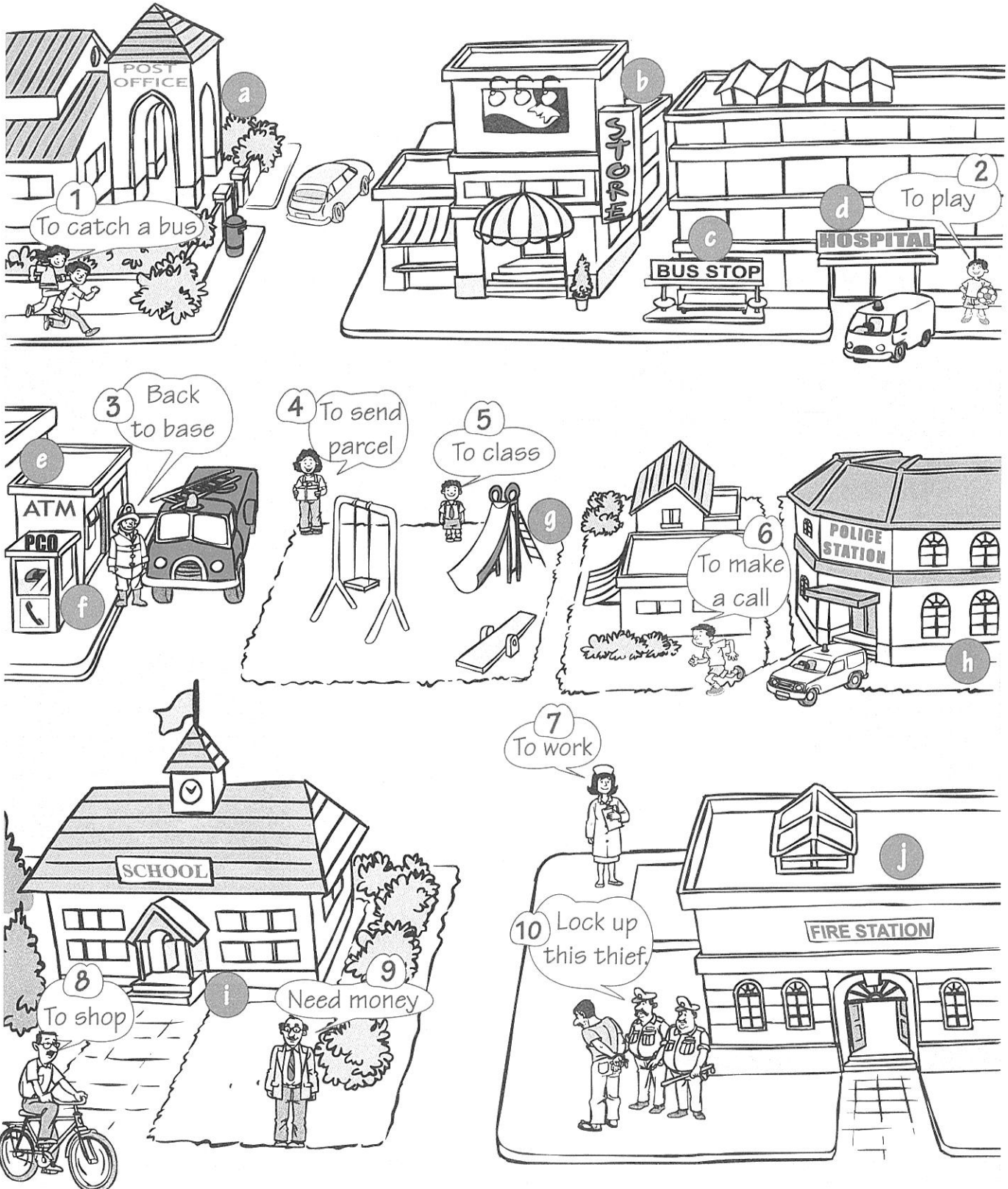
- a. fisherman
- b. fishmonger
- c. farmer



- a. gardener
- b. florist
- c. butcher

# 18. Where Are They Going?

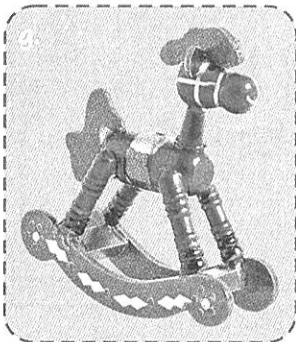
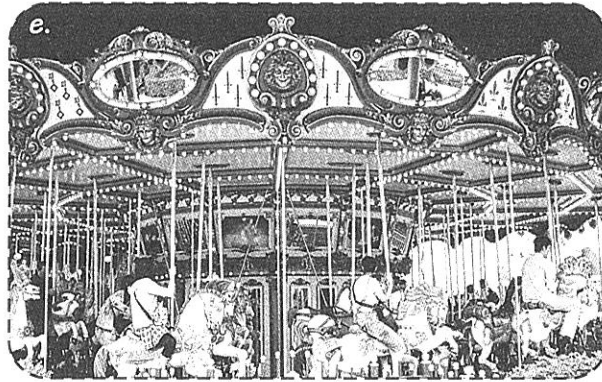
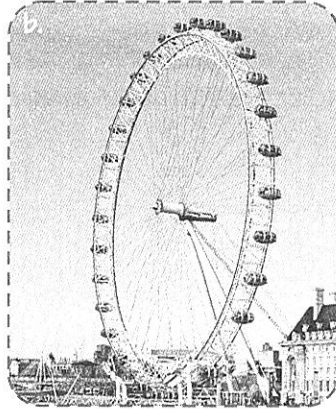
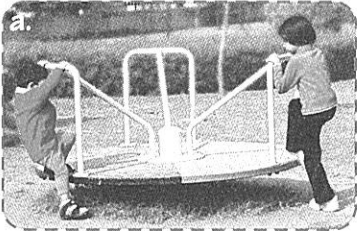
Where are they going? Join to show.



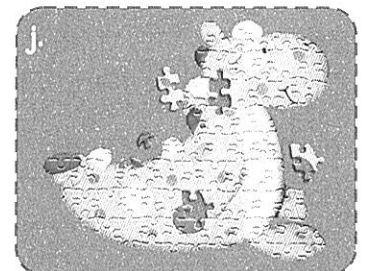
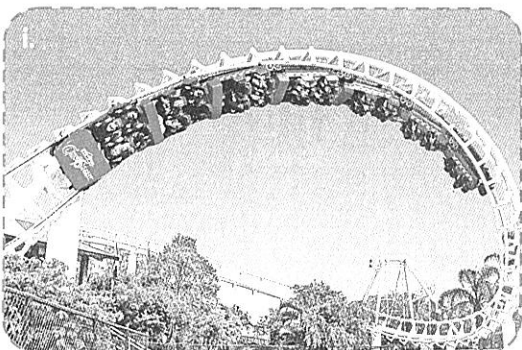


# 19. Fun and Games

1. Match as shown.



- ☒ c Slide
- ☐ Swing
- ☐ Monkey ladder
- ☐ Ferris wheel
- ☐ Jigsaw
- ☐ Rocking horse
- ☐ Roller coaster
- ☐ Roundabout
- ☐ Merry-go-round
- ☐ Jungle gym



2. Join as shown.

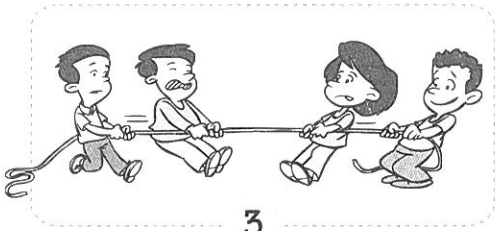


Blind man's

1

buff

war



3

Hopscotch



2

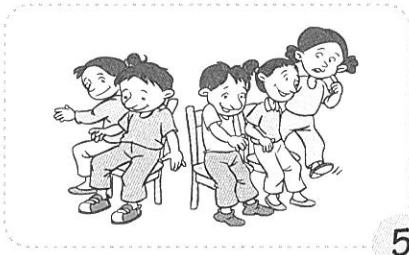
chairs

Tug of



4

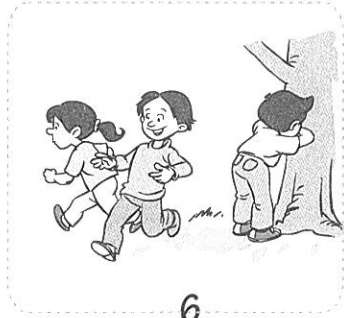
Musical



Kabaddi

5

Hide-and-



6

Tic-tac-

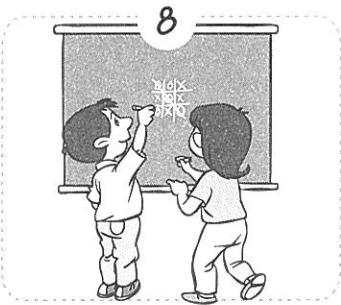
Chinese



7

Kho-kho

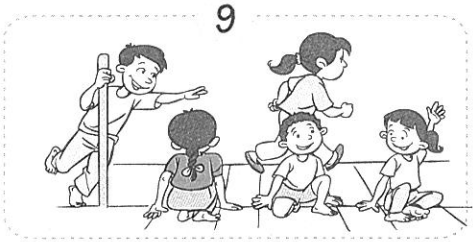
seek



8

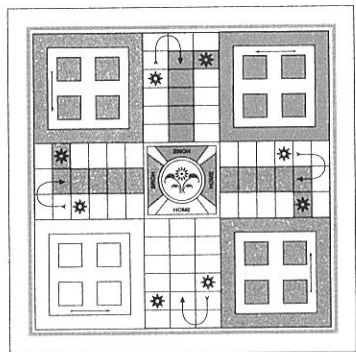
whispers

toe

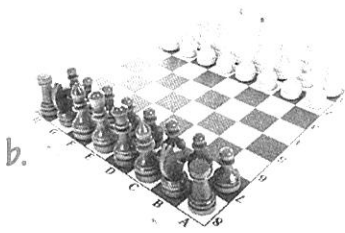


9

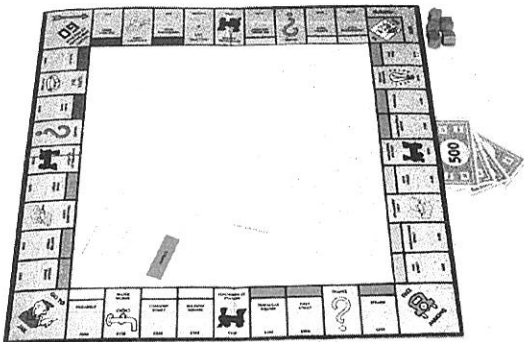
3. Ring the names of the games.



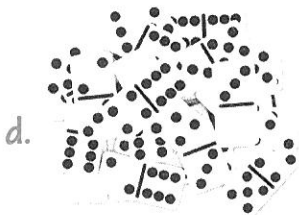
a.



b.



c.

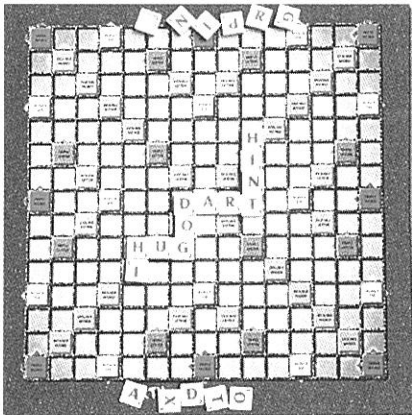


d.

	C		S	H	N	W	L	U	D	O	R	U	N	P	
R	A	D	A	R	T	S								N	
	R	G	B	Y	C	H	E	S	S	B	L	O			
L	R	T	V	N	D	C	H	T	C	K	Q	R	S		
	O		D	O	M	I	N	O	E	S	T				
	M	T	H	M	O	N	O	P	O	L	Y	N			
		W	S	C	R	A	B	B	L	E	T				



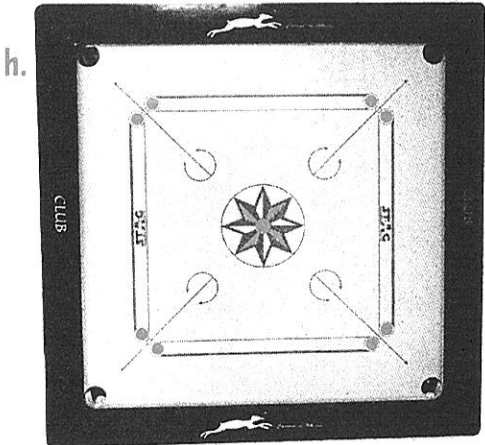
e.



f.



g.



h.



4. Tick the game in which these are used.

a.



Chinese checkers

Monopoly

b.



Pictionary

Chess

c.



Darts

Battleship

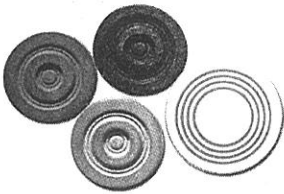
d.



Snakes and ladders

Life

e.



Ludo

Carrom

f.



Patience

Uno

g.



Scrabble

Fish

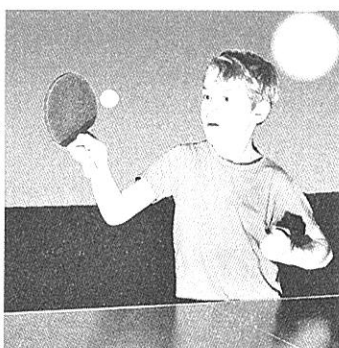
h.



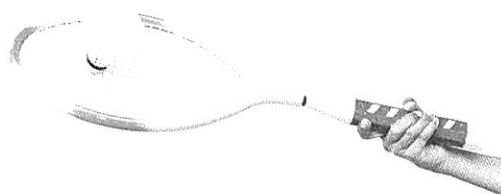
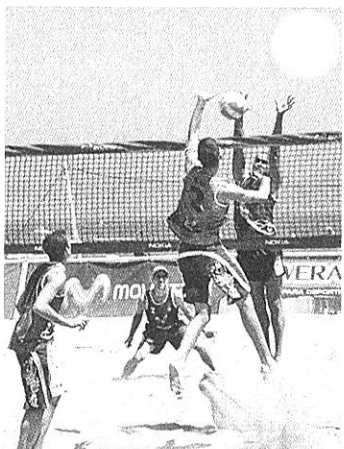
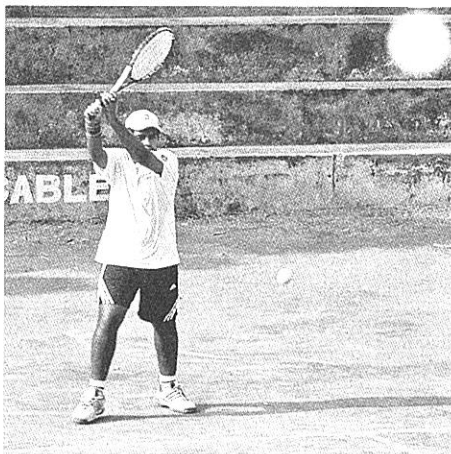
Dominoes

Tic-tac-toe

5. Which sport? Write the correct number from the list.

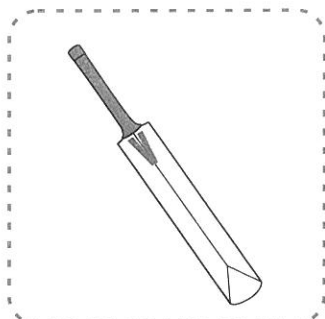


1. Golf
2. Football
3. Basketball
4. Cricket
5. Tennis
6. Table tennis
7. Badminton
8. Hockey
9. Volleyball
10. Swimming



## 20. Bats and Balls

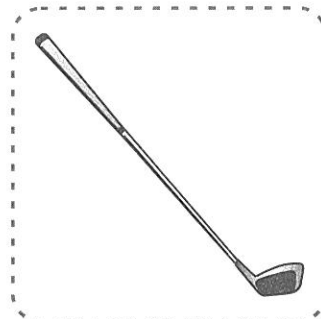
1. Match as shown.



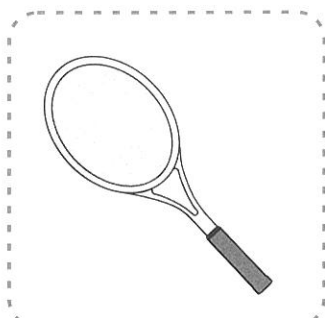
1. Cricket bat



2. Baseball bat



3. Golf club



4. Tennis racket



a.



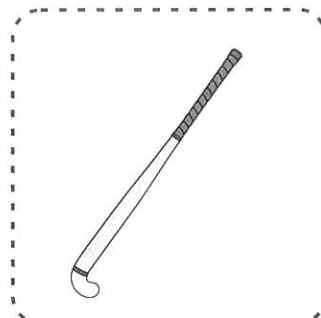
b.



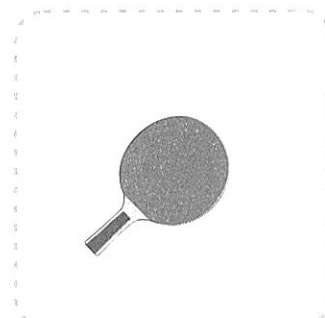
c.



d.



5. Hockey stick



6. Table tennis racket



e.



f.



g.



7. Badminton racket

2. Which game's ball? Tick to show.

a.



Tennis

Basketball

Baseball

b.



Golf

Football

Basketball

c.



Handball

Polo

Rugby

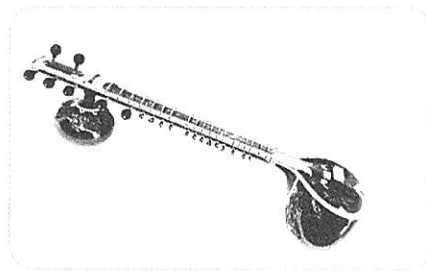
# 21. Making Music

Name these. How do we play them? Write B for beating, W for blowing, K for pressing keys and S for plucking strings.

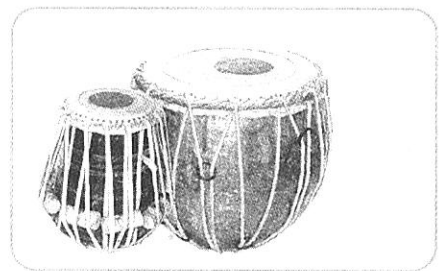


W

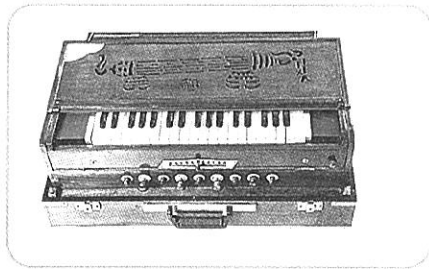
1. flute



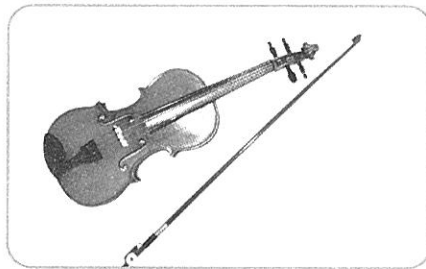
2.



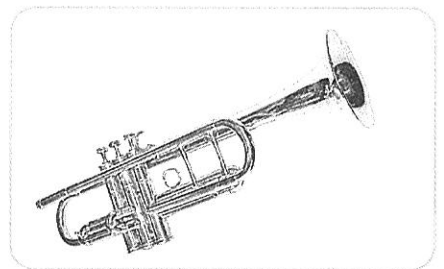
3.



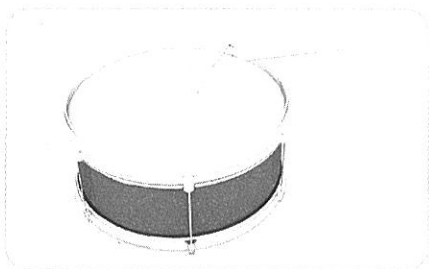
4.



5.



6.



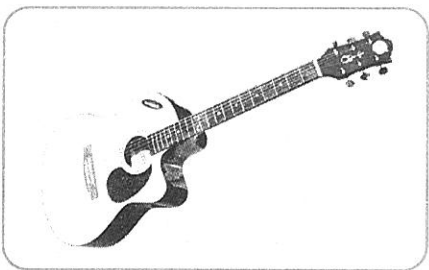
7.



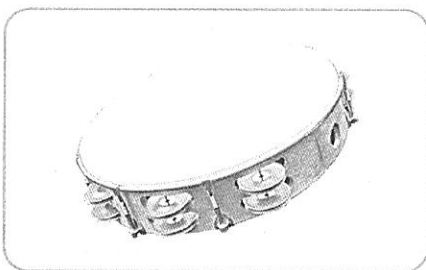
8.



9.



10.



11.



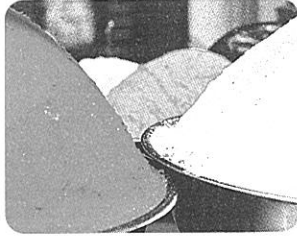
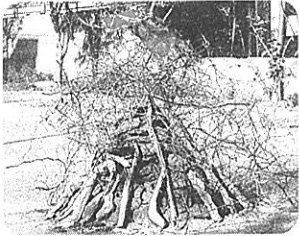
12.

## 22. Festivals

Each group of pictures is from a festival. Tick the things that are true for the festival.



1.



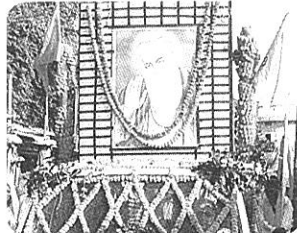
- a. Holi
- b. Festival of colours
- c. Festival of fire
- d. Spring season

2. a. Id-ul-Fitr

- b. People pray together
- c. Special sweets are made
- d. Ends Ramadan, the month of dawn-to-dusk fasts



3.



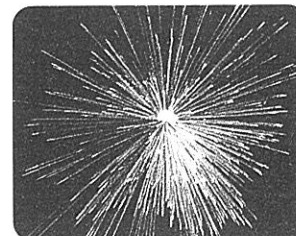
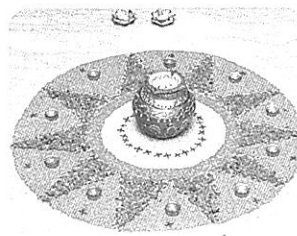
- a. Guruparabs
- b. Processions
- c. Summer festival
- d. Remembering Sikh gurus

4. a. Easter

- b. Christmas
- c. December 25
- d. Gifts and cards



5.

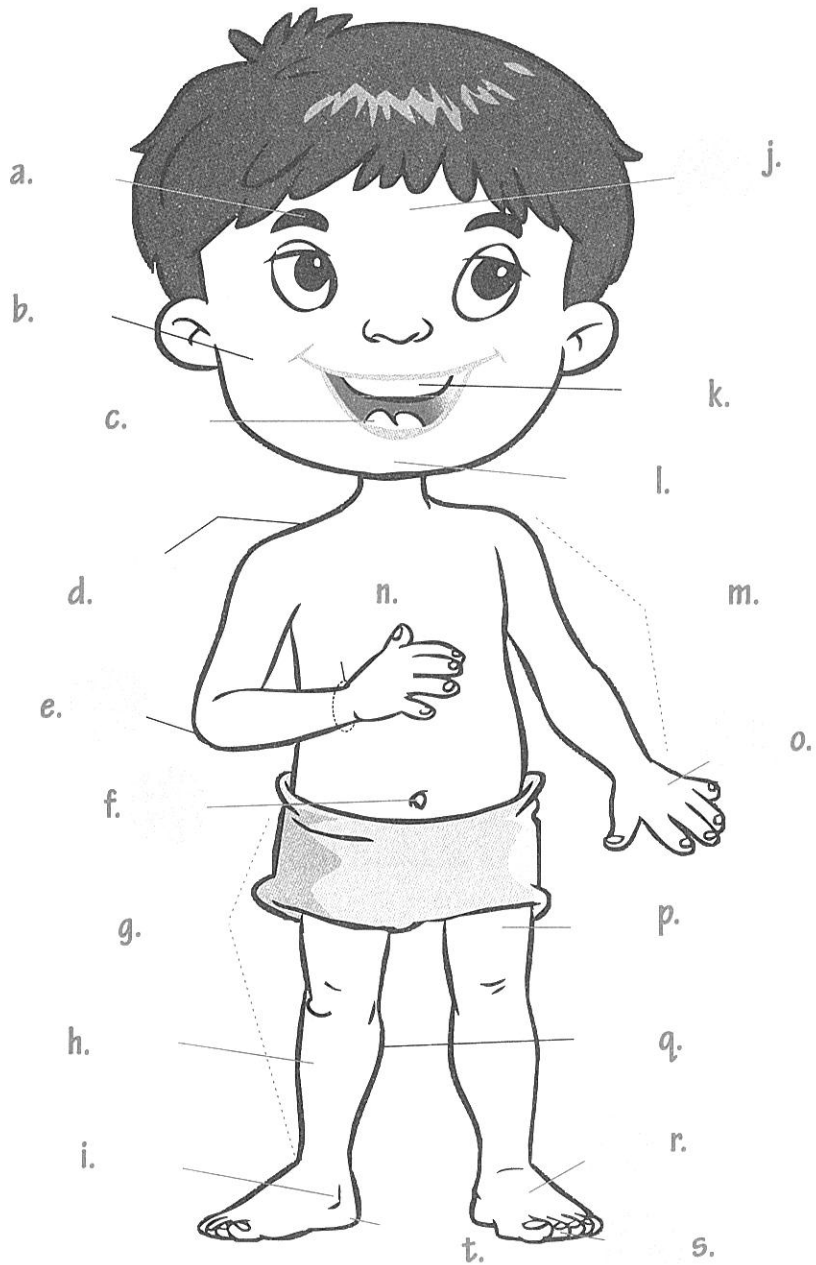


- a. Rama returned home
- b. Festival of light
- c. Diwali
- d. Rangoli and fireworks

## 23. Parts of the Body

1. Write the correct numbers in the circles.

1. Forehead
2. Eyebrow
3. Cheek
4. Teeth
5. Tongue
6. Chin
7. Shoulder
8. Elbow
9. Hand
10. Arm
11. Toe
12. Navel
13. Wrist
14. Thigh
15. Leg
16. Shin
17. Ankle
18. Calf
19. Heel
20. Foot



- Our eyes never grow.
- Our nose and ears never stop growing!
- Fingernails grow much faster than toenails.
- The nail of our middle finger grows the fastest.



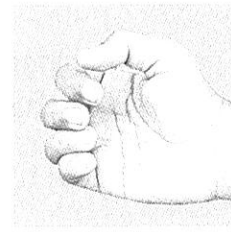
2. Cross out what is not there in the picture.

1.



Forehead  
Cheeks  
Eyebrows  
Nails  
Mouth

2.



Palm  
Nails  
Little toe  
Little finger  
Thumb

3.



Heel  
Sole  
Big toe  
Nails  
Fingers

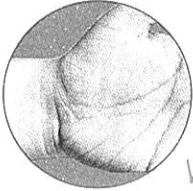
4.



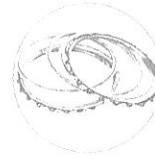
Thigh  
Elbow  
Calf  
Shin  
Ankle

3. What does not go with the body part? Pick the odd one out.

1.



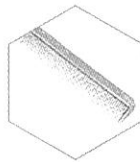
Wrist



2.



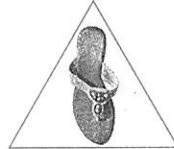
Hair



3.



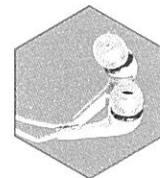
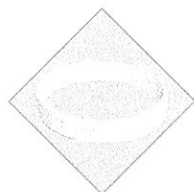
Foot



4.



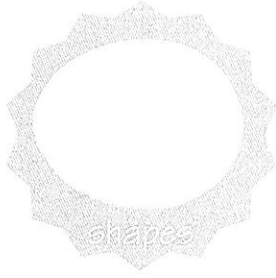
Ear



## 24. The Five Senses

Our senses help us know things. The sense of **sight** tells us how a thing looks. We also have the senses of **smell**, **taste**, **hearing** and **touch**.

Which sense helps you know:



shapes

1. sight



salty

2. \_\_\_\_\_



sweet

3. \_\_\_\_\_



sour

4. \_\_\_\_\_



rough

5. \_\_\_\_\_



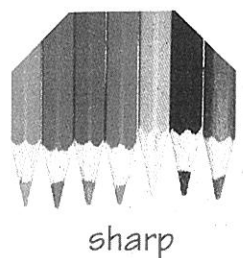
loud

6. \_\_\_\_\_



cold

7. \_\_\_\_\_



sharp

8. \_\_\_\_\_



strong

9. \_\_\_\_\_



bitter

10. \_\_\_\_\_



colours

11. \_\_\_\_\_



harsh

12. \_\_\_\_\_

The tongue can taste only salty, sweet, bitter and sour food. So how does it know spicy food? The tongue has the sense of touch too. To the tongue, chillies and peppers feel hot and sharp. They make our eyes and nose burn too.



## 25. Materials

Books are made of paper and sweaters are made of wool. Paper and wool are **materials**. We make things with materials. Clay, wood, metal and rubber are other examples of materials.

### 1. Rearrange the letters to find the names of materials.

a. C Y L A

C

b. O D W O

W

c. M E A L T

M T

d. G S L A S

G L

e. E N O T S

S

f. T O N C O T

C O N

g. R E B B U R

R R

h. L A S P T I C

P L

Materials have different qualities. They can be hard or soft, strong or weak, shiny or dull. Things made from a material have its qualities.



### 2. Fill in.

a. We use metals to make nails because metals are \_\_\_\_\_.



b. Windows have glass because we can \_\_\_\_\_ through glass.

c. We use rubber to make balloons because rubber can \_\_\_\_\_.



d. Pans have plastic handles because plastic does not get \_\_\_\_\_ easily.

e. Glass bottles \_\_\_\_\_ more easily than plastic bottles.

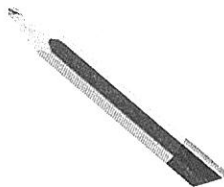


f. It is easier to \_\_\_\_\_ wood than metals like iron.

3. What are these made of? [metal wood wool clay plastic stone rubber glass leather]



a. \_\_\_\_\_



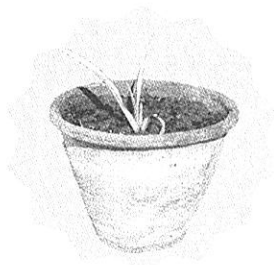
b. \_\_\_\_\_



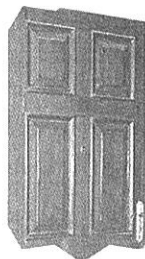
c. \_\_\_\_\_



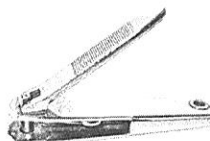
d. \_\_\_\_\_



e. \_\_\_\_\_



f. \_\_\_\_\_



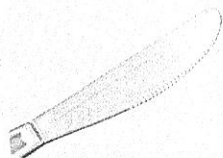
g. \_\_\_\_\_



h. \_\_\_\_\_



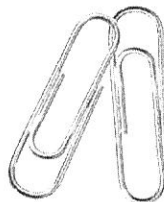
i. \_\_\_\_\_



j. \_\_\_\_\_



k. \_\_\_\_\_



l. \_\_\_\_\_



m. \_\_\_\_\_



n. \_\_\_\_\_



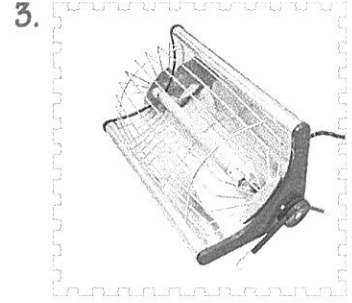
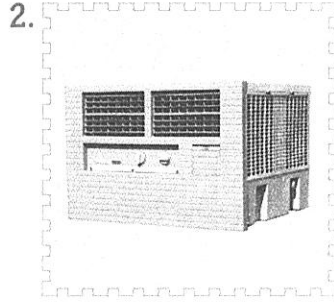
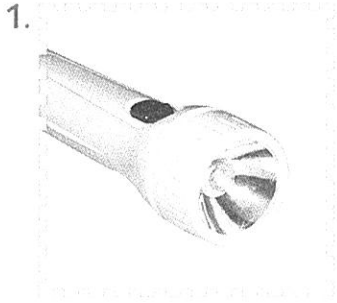
o. \_\_\_\_\_



p. \_\_\_\_\_

## 26. Things We Use

1. What do we use these for? Fill in the picture numbers to show.



a. Watch cartoons ☐

b. Heat a room ☐

c. Cool a room ☐

d. Cook food ☐

e. Keep food fresh ☐

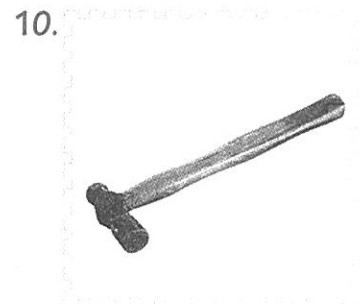
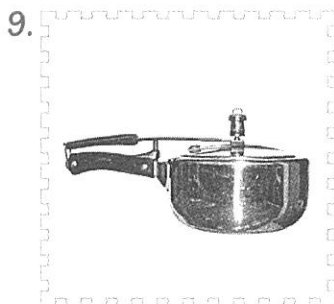
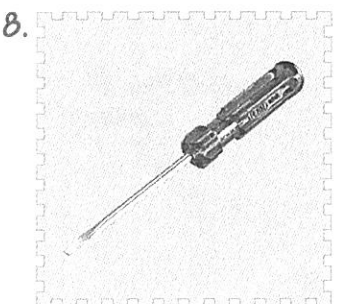
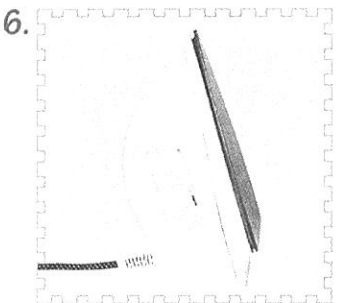
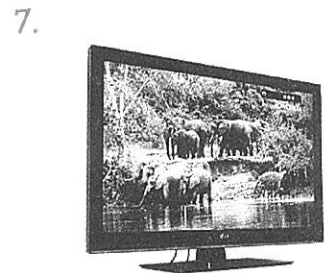
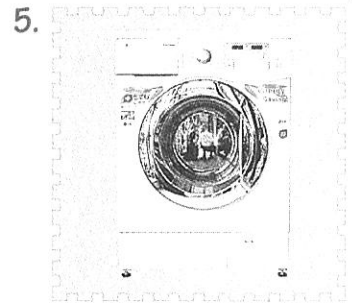
f. See in the dark ☐

g. Iron clothes ☐

h. Wash clothes ☐

i. Fix nails ☐

j. Fix screws ☐



2. Where do we use these? Write H for house and G for garden.

a.



b.



c.



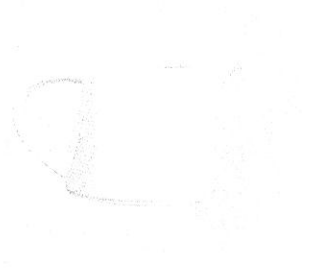
d.



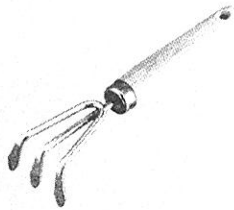
e.



f.



g.



h.



i.



j.



k.



l.





# 27. Computers

1. Do you know the parts of a desktop computer? Fill in the numbers from below to show.



1. **Monitor**     The monitor's screen shows text and pictures.
2. **Keyboard**     It has keys for typing in letters and numbers.
3. **CPU box**     It has the CPU, which is the 'brain' of the computer.
4. **Speaker**     The speakers play sound.
5. **Mouse**     We click this to select things on the screen.

2. What are these? Rearrange the letters and write.

a.



L A C C U L A R O T

C

b.



T E L B A T

T

c.



A L T O P P

L

## 28. Quiz 2

1. Tick the correct answer.

1. Very tall buildings are called

a. flats

b. skyscrapers

c. apartments

2. A place for sports

a. castle

b. hotel

c. stadium

3. People who are ill go to a

a. hospital

b. hotel

c. station

4. The Titanic was a

a. train

b. ship

c. rocket

5. Soccer is

a. cricket

b. hockey

c. football

6. A ball is not used in

a. badminton

b. hockey

c. table tennis

7. In golf, the ball is hit with a

a. bat

b. racket

c. club

8. Santa Claus rides in a sleigh pulled by

a. horses

b. reindeer

c. bullocks

9. This is a

a. violin

b. guitar

c. sitar



10. You will find this in the

a. kitchen

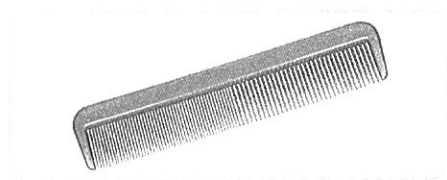
b. garden

c. bathroom



11. What is this made of?

- a. metal
- b. clay
- c. plastic



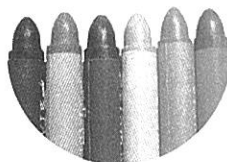
12. We use this to turn

- a. screws
- b. nuts
- c. nails



2. Match.

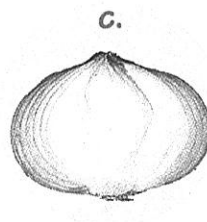
1. Sweet smell



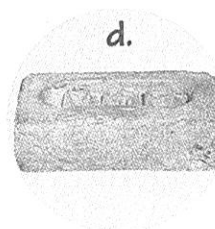
2. Strong smell



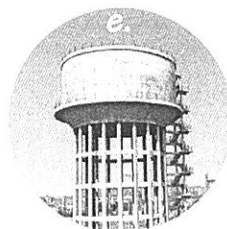
3. Lighthouse



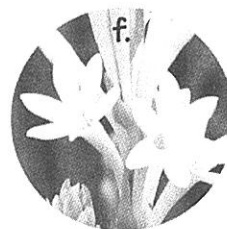
4. Water tower



5. Made of wax

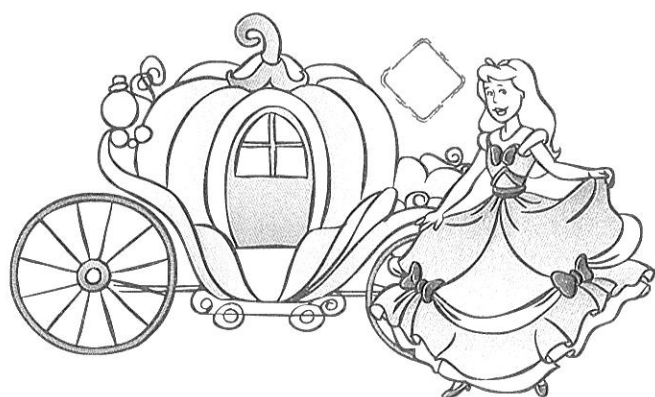
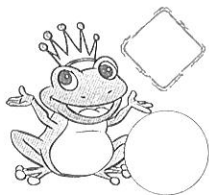


6. Made of clay



## 29. Stories

Who are they? Fill in the correct number from the list of names.



1. Big bad wolf
2. Cinderella
3. Frog prince
4. Goldilocks and bears
5. Hansel and Gretel

6. The three little pigs

7. Pinocchio

8. Rapunzel

9. Red Riding Hood

10. Thumbelina



## 30. Rhymes

Tick the right word.

1. Old MacDonald had a

Zoo  
Farm  
Garden



2. Jack and Jill went to fetch  
water in a

Jug  
Mug  
Pail



3. Wee Willie Winkie runs about  
in his

Pyjamas  
Overcoat  
Nightgown



4. Polly put this on the fire.

Kettle  
Teapot  
Pot



5. Little Jack Horner was eating his

Christmas cake  
Christmas pudding  
Christmas pie



6. Miss Muffet was scared by a

Cockroach  
Spider  
Bee



7. My dame has lost her

Slipper  
Sock  
Shoe



8. Mary's garden has silver bells and

Cockle shells  
Deep wells  
Copper bells



# 31. Story Creatures

Fill in picture numbers to match.

1.



2.



3.



4.



6.



5 Dragon

Fairy

Genie

Elf

Giant

Witch

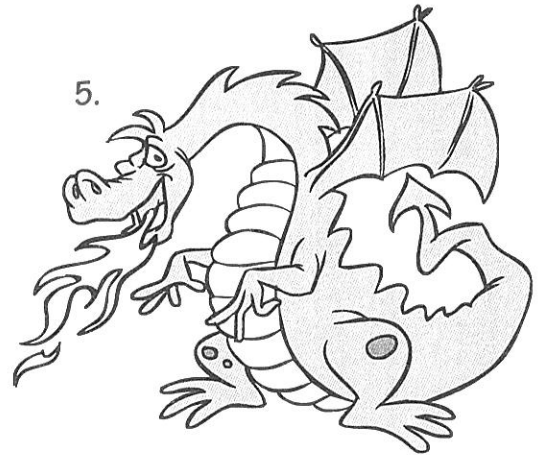
Unicorn

Monster

Goblin

Winged horse

5.



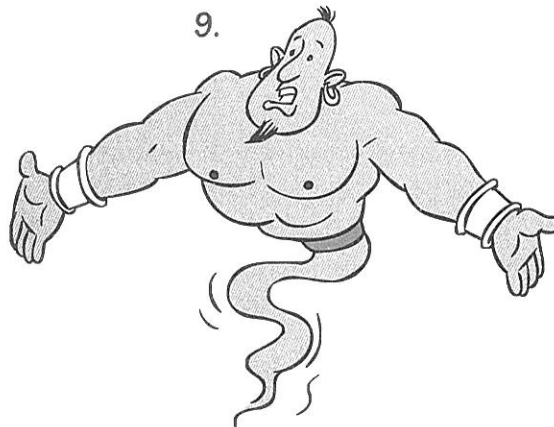
7.



8.



9.



10.





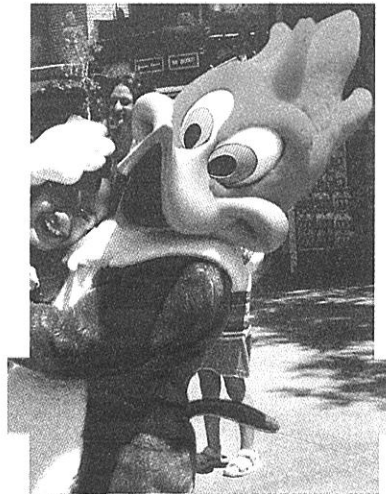
## 32. Cartoons and Movies

1. The boxes have the names of cartoon characters. The names of their friends are given below.  
Write the names of their friends, as shown.

a.

Mickey and Minnie Mouse  
Donald and Daisy Duck

Goofy  
Pluto



b.

Winnie the Pooh  
Tigger

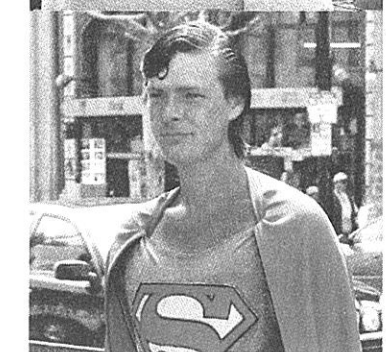


d.

Bob  
Wendy

c.

Noddy  
Big-Ears



f.

Bheem  
Chutki

e.

Dennis  
Ruff

Joey Raju Bumpy Dog Goofy Mr and Mrs Tubby Bear Pilchard  
Roo Scoop Pluto Jaggu Eeyore Mr and Mrs Wilson

2. Which animal has this name in a comic or a movie? Match to show.

a. Goofy



Mouse



Black panther

g. Dunston

b. Stuart Little



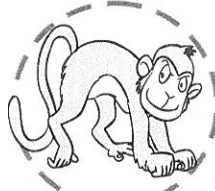
Dog



Cat

h. Snowbell

c. Winnie the Pooh



Monkey



Orang-utan

i. Bagheera

d. Nemo



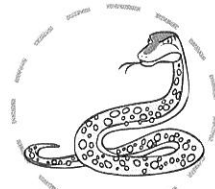
Bear



Penguin

j. Eeyore

e. Jaggu



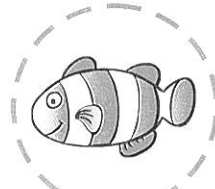
Python



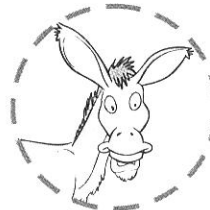
Hornbill

k. Mumble

f. Kaa



Clownfish

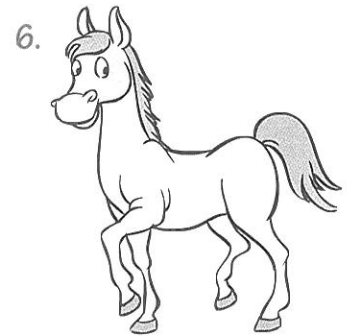
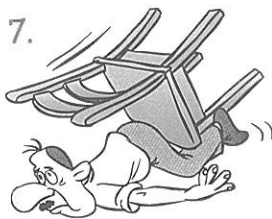
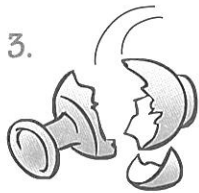
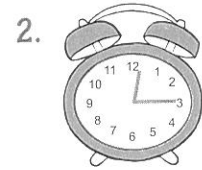


Donkey

l. Zazu

# 33. Sounds

Match.



crash

thud

ding-dong

tick-tock

bang

clip-clop

splash

slurp

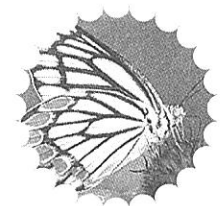
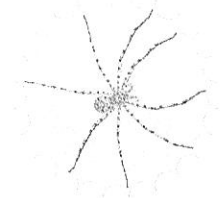
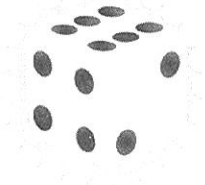
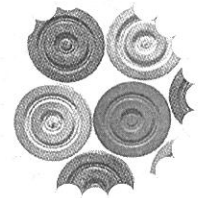
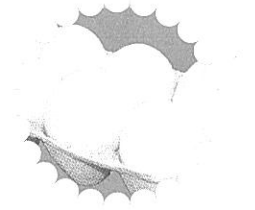
chomp

pitter-patter

## 34. How Many?

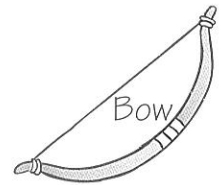
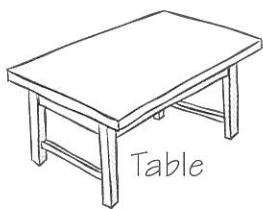
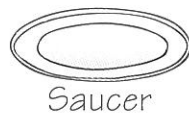
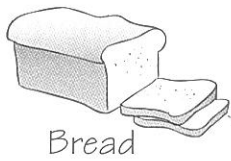
Ring the correct number.

1. Things in a dozen	10	11	12
2. Years in a century	100	50	10
3. Letters in the English alphabet	20	25	26
4. Colours in a rainbow	6	7	8
5. Faces in a dice	6	5	4
6. Pieces on a carrom board	10	15	19
7. Players in a game of chess	2	4	8
8. Wheels in an auto-rickshaw	2	3	4
9. Snow White's dwarf friends	7	10	15
10. Blackbirds in the sixpence song	12	24	25
11. Corners in a rectangle	3	4	0
12. A snake's legs	4	2	0
13. Our toenails	10	15	20
14. A spider's legs	6	8	12
15. A butterfly's wings	2	4	6



# 35. Pairs

1. Make pairs.



2. Fill in the right words to make word pairs.

- Fruit and \_\_\_\_\_
- Ladies and \_\_\_\_\_
- Pen and \_\_\_\_\_
- Salt and \_\_\_\_\_
- Pots and \_\_\_\_\_
- \_\_\_\_\_ and dogs
- \_\_\_\_\_ and tigers
- \_\_\_\_\_ and ladders



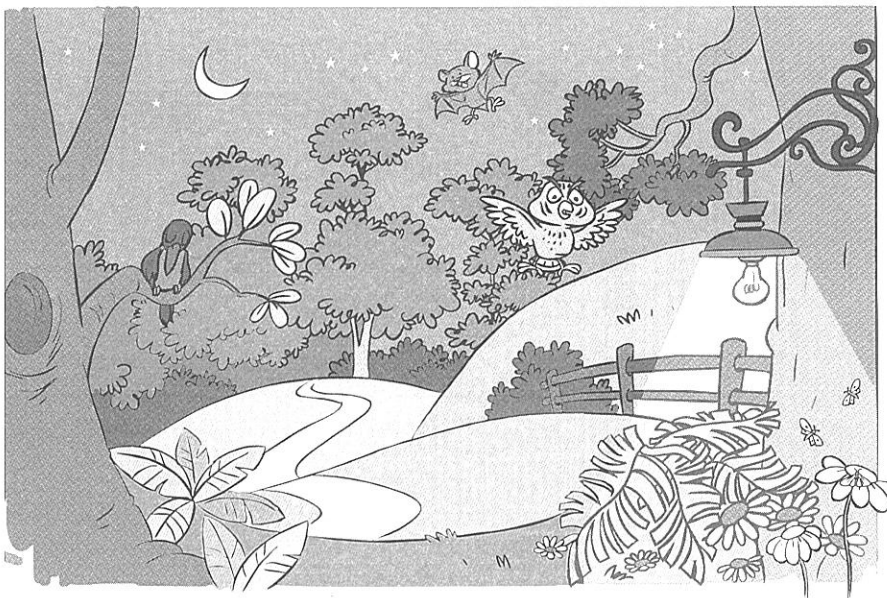
# 36. Day and Night



Look at the pictures and fill in D for day and N for night.



1. The sun is shining. \_\_\_\_
2. There are stars in the sky. \_\_\_\_
3. The crow is flying. \_\_\_\_
4. The bat is looking for food. \_\_\_\_
5. The owl is hunting. \_\_\_\_
6. The bees are busy. \_\_\_\_
7. There are many butterflies. \_\_\_\_
8. The park light is on. \_\_\_\_
9. The park light is off. \_\_\_\_

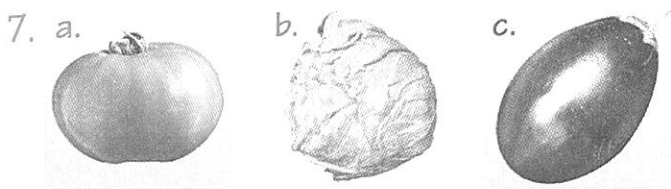
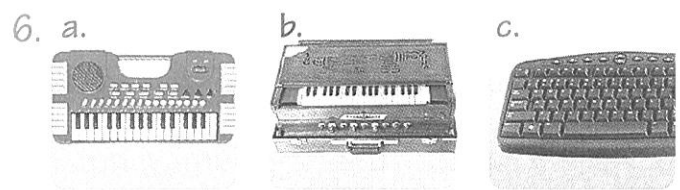
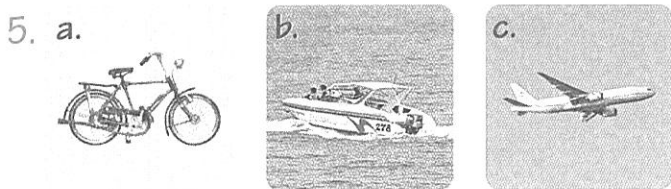
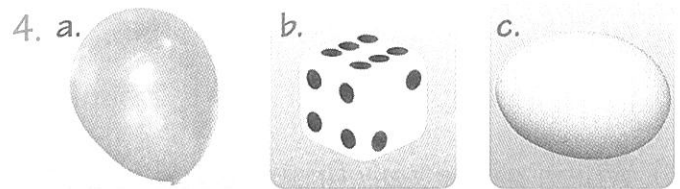
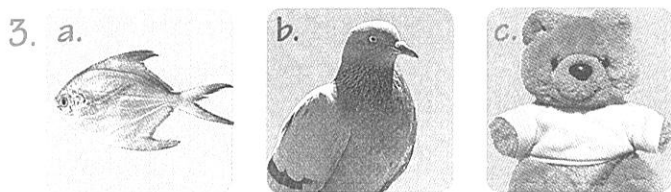
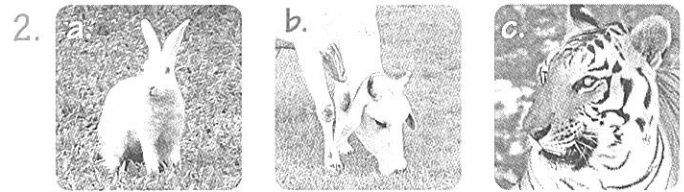
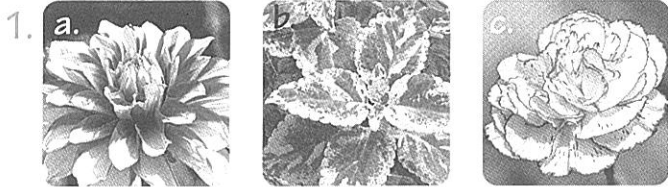


10. The children are playing. \_\_\_\_
11. The crow is asleep. \_\_\_\_
12. The children have gone home. \_\_\_\_
13. The owl is resting. \_\_\_\_
14. The bat is asleep. \_\_\_\_
15. Moths are flying about. \_\_\_\_
16. The bees have gone home. \_\_\_\_



# 37. Odd One Out

Pick the odd one out.



## 38. My India

1. Tick the correct answer.

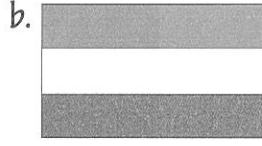
1. The capital of India is

a. Mumbai

b. New Delhi

c. Kolkata

2. Which is the flag of India?



3. Which is Indian?

a. noodles

b. pizza

c. idli

4. Which is an Indian river?

a. Nile

b. Narmada

c. Niger

5. Which is Indian?

a. tabla

b. violin

c. guitar

6. Which game was first played in India?

a. chess

b. tennis

c. cricket

7. Which is not an Indian language?

a. Marathi

b. Malay

c. Malayalam

8. Our country is run by a leader called the

a. chief minister

b. leader minister

c. prime minister

9. Raju's father runs the family, but his grandfather is the head of the family. Our prime minister runs the country, but the head of the country is the

a. president

b. governor

c. king

10. Who was India's first president?



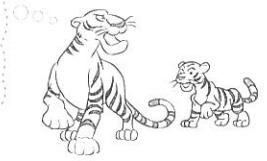
Mahatma Gandhi

Dr Rajendra Prasad

Sardar Patel



National means things related to a nation like India. India's national anthem is *Jana-gana-mana*. We sing our national anthem on special occasions such as raising the national flag.



11. Which is India's national animal?

a. lion

b. tiger

c. elephant

12. Which is India's national bird?

a. peacock

b. parrot

c. koel

13. Which is India's national flower?

a. rose

b. lily

c. lotus

14. Which is India's national fruit?

a. litchi

b. banana

c. mango

15. Which is India's national tree?

a. banyan

b. palm

c. pine

## 2. Rearrange the letters and fill in.

1. The name of an Indian river

M U N A A Y

Y A

2. An Indian city

A N T A P

P A

3. An Indian dress

U N D U M

M U

4. An Indian food

L A D H O K

D H

5. The wheel in the middle of India's flag

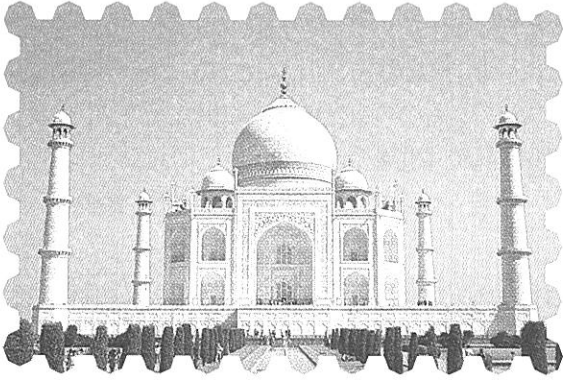
A R K A H C

C H

## 39. Monuments of India

Can you name these? Do you know where they are?

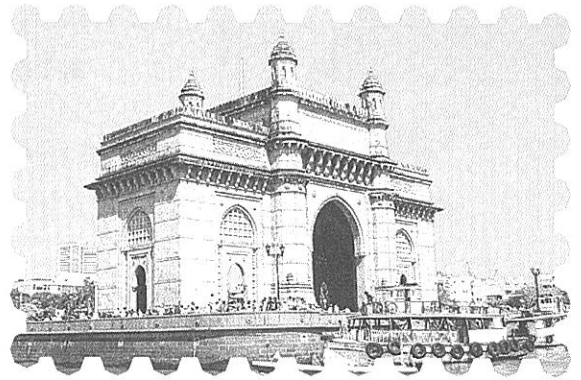
1.



Name: \_\_\_\_\_

Place: \_\_\_\_\_

2.



Name: \_\_\_\_\_

Place: \_\_\_\_\_

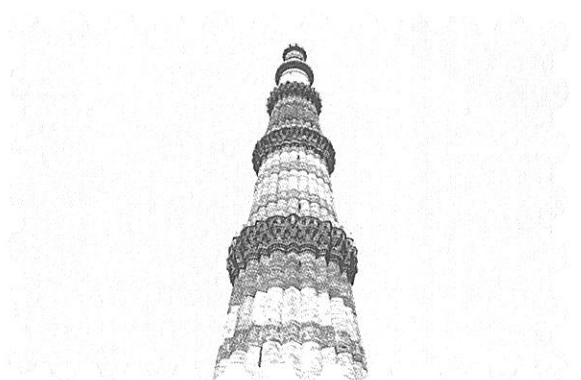
3.



Name: \_\_\_\_\_

Place: \_\_\_\_\_

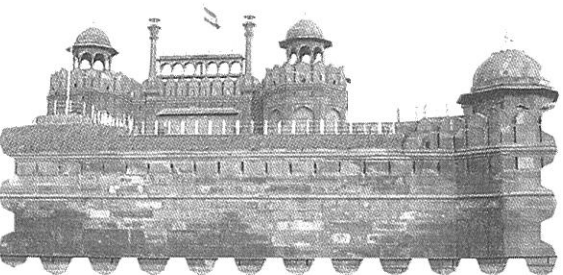
4.



Name: \_\_\_\_\_

Place: \_\_\_\_\_

5.



Name: \_\_\_\_\_

Place: \_\_\_\_\_

Qutb Minar

Agra

Victoria Memorial

Delhi

Red Fort

Kolkata

Gateway of India

Taj Mahal

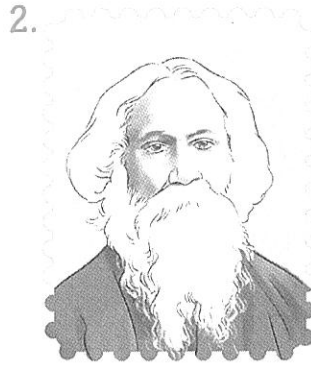
Mumbai

## 40. Famous Indians

Match as shown.



Father of the nation



Poet



First prime minister



Religious leader

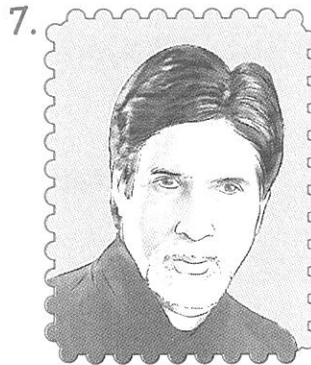
- 7 ☐ Amitabh Bachchan
- ☐ Gandhiji
- ☐ Jawaharlal Nehru
- ☐ Mahendra Singh Dhoni
- ☐ Mother Teresa
- ☐ Pandit Ravi Shankar
- ☐ Rabindranath Tagore
- ☐ Swami Vivekananda



Helped the poor



Musician



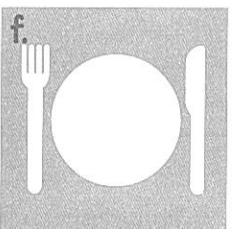
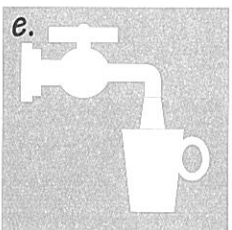
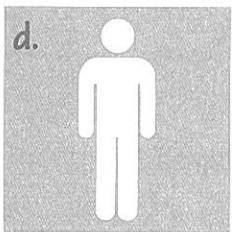
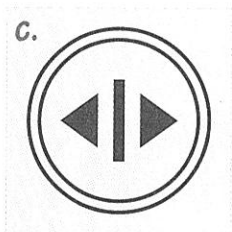
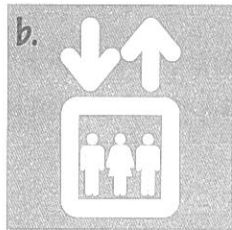
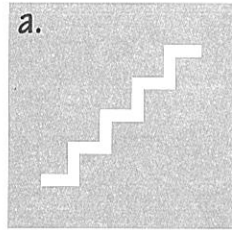
Actor



Cricketer

# 41. Reading Signs

1. Do you know what these signs say? Match to show.



Exit

Cross here

Stairs

Men's toilet

Women's toilet

Lift

Place to eat

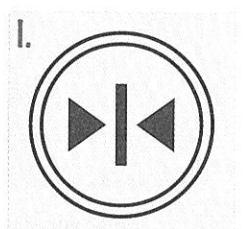
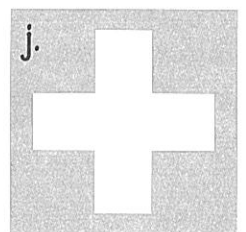
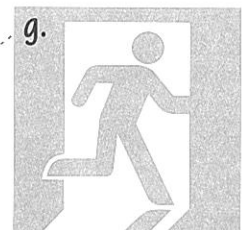
Close lift doors

First-aid box

Open lift doors

Drinking water

Dustbin



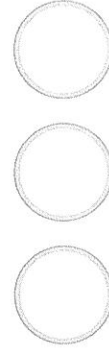


## 2. Colour.

a. This light says **stop**.

b. This light says **wait**.

c. This light says **go**.



## 3. Colour the correct box.

a. This sign says   .

b. This sign says   .

c. The picture below shows a   .

d. We use it to safely cross   .





## 42. Houses of Prayer

Fill in.

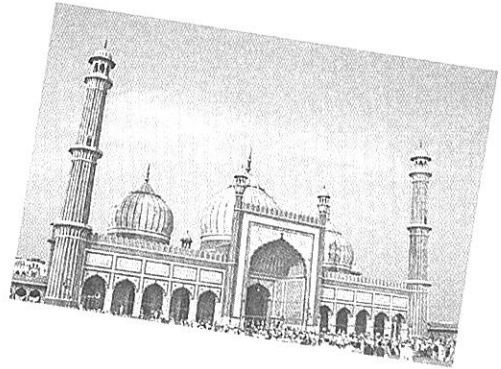
1.



a. This is a \_\_\_\_\_.

b. \_\_\_\_\_ pray here.

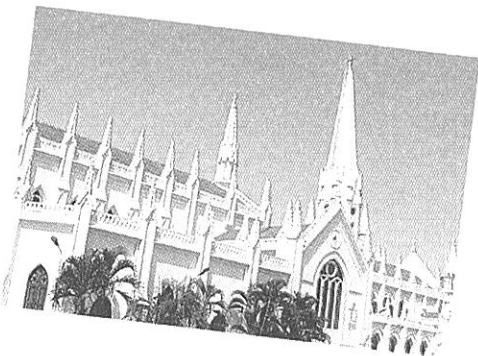
2.



a. This is a \_\_\_\_\_.

b. \_\_\_\_\_ pray here.

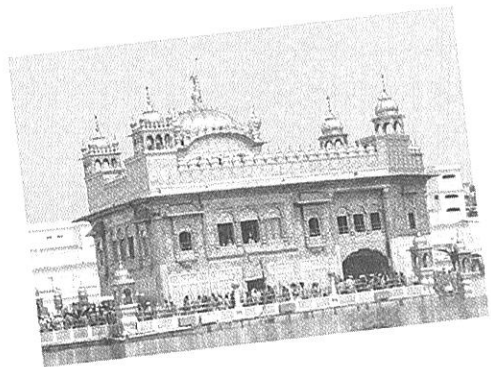
3.



a. This is a \_\_\_\_\_.

b. \_\_\_\_\_ pray here.

4.



a. This is a \_\_\_\_\_.

b. \_\_\_\_\_ pray here.

## 43. Quiz 3

Tick the correct answer.

1. Who lives in Toyland?

a. Mickey Mouse

b. Mother Goose

c. Noddy

2. Whose dog is Ruff?

a. Noddy

b. Dennis the Menace

c. Tintin

3. Which of these is not used in ludo?

a. striker

b. counter

c. dice

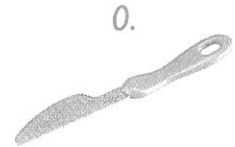
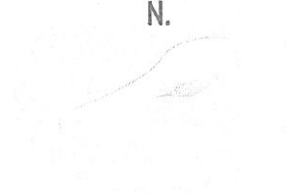
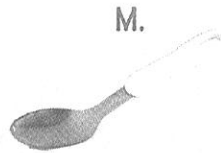
4. The pips (dots) on any two opposite faces of a dice add up to

a. seven

b. eight

c. ten

5. Which two belong to the same set?



a. L and M

b. M and N

c. M and O

6. Who is she dressed as?

a. Cinderella

b. Goldilocks

c. Snow White

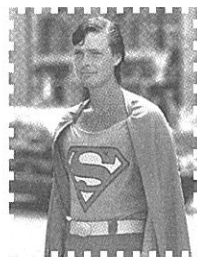


7. Who is he dressed as?

a. Batman

b. Superman

c. Strongman



8. Butterflies taste with their

a. feelers

b. feet

c. wings

9. Index, middle, ring and little are names of

a. senses

b. teeth

c. fingers

10. Pick the odd one out.

a. kachori

b. golgappa

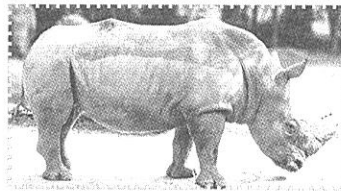
c. panipuri

11. This is a

a. dinosaur

b. buffalo

c. rhinoceros

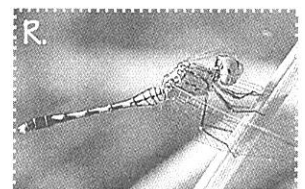
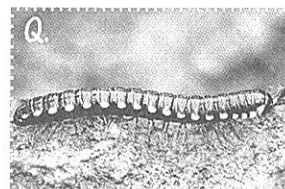
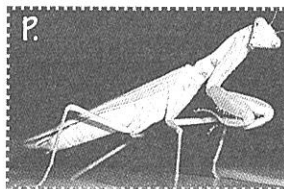


12. Which one has **dragon** as part of its name?

a. P

b. Q

c. R

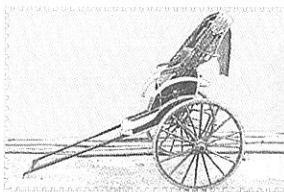


13. What form of transport is this?

a. rickshaw

b. cart

c. trolley



14. Which is the longest river in India?

a. Yamuna

b. Ganges (Ganga)

c. Kaveri

15. Pick India's neighbour.

a. USA

b. Singapore

c. Bhutan

16. Which city is not in India?

a. Karachi

b. Kochi

c. Ranchi